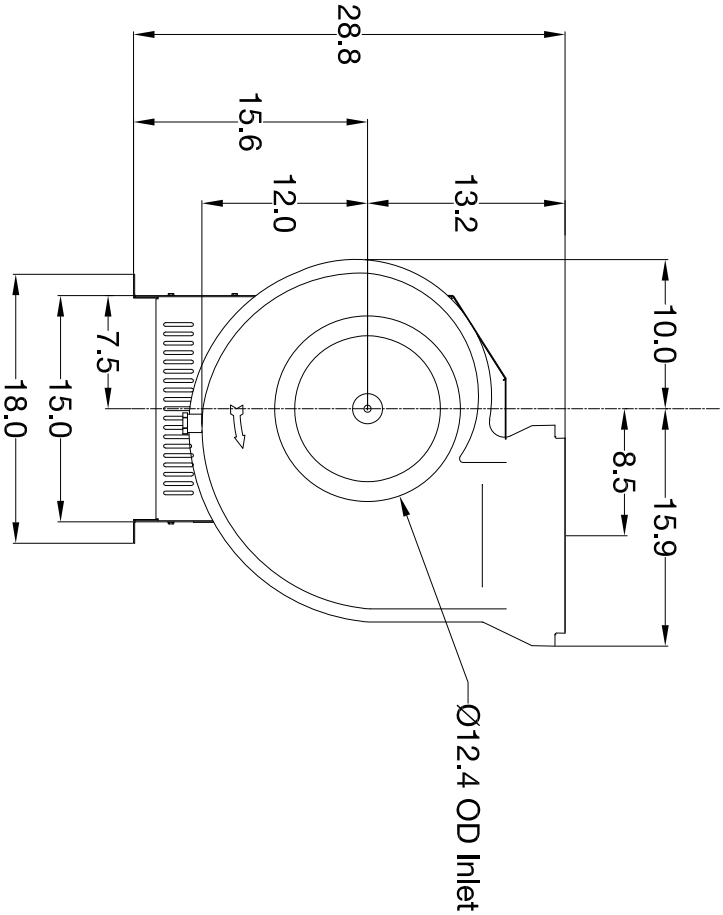
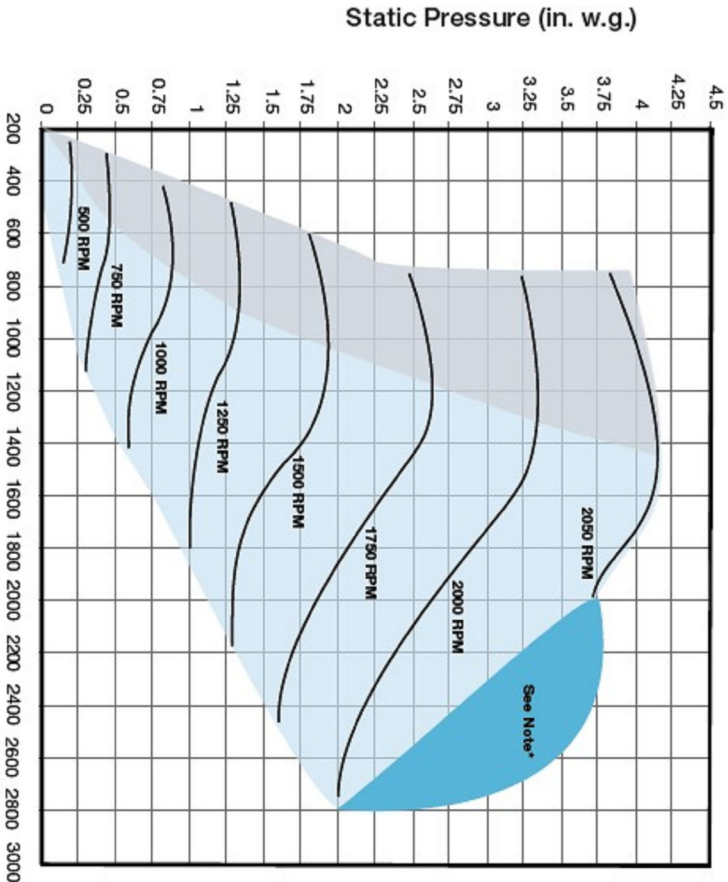


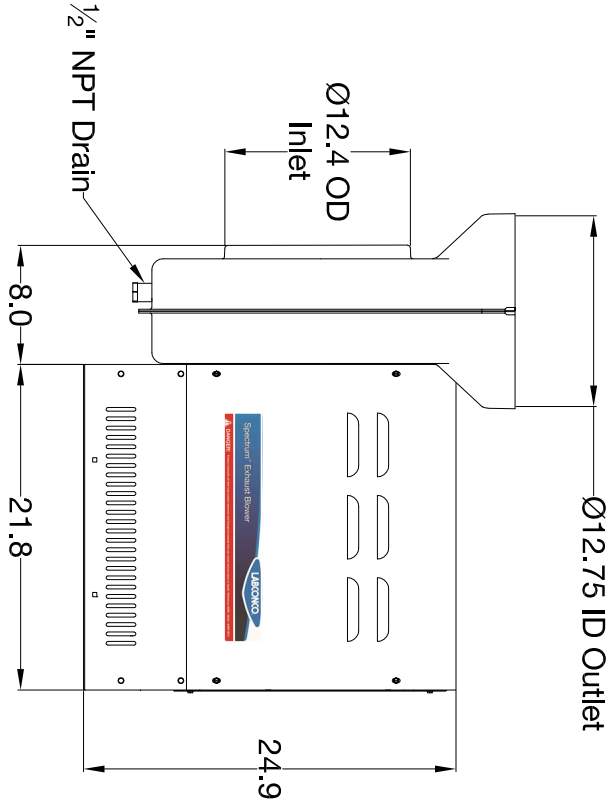
Top View



Front View



Blower Performance Curve



Side View

GENERAL DESCRIPTION

Spectrum Exhaust Blower
PVC, 12" inlet
Model # 177252200

Materials of Construction

- Powder-coated steel base with weather cover
- Vacuum formed, unplasticized Type 1 PVC housing for highly corrosive applications
- Injection-molded, PVDF, forward-curved impellers
- Non-sparking materials of construction in the airstream making it perfectly suited for applications serving electrically classified spaces.
- 1/2" NPT drain for use with wash down systems

Motor Details

- 2 HP Direct Drive, UL listed, VFD motor
- Thermal overload protection reduces RPM automatically when motor is overloaded.

Motor Setup/Communication

- 3 input options to set motor RPM
 - Manual potentiometer
 - 0-10V
 - 4-20mA
- Motor signal output via RS232 or RS485

Electrical

- 230V, 1ph/3ph, 50/60 Hz

Conforms to:

- ANSI/ASSP Z9.5
- UL listed motor
- AMCA 99

Blower Performance Curve Note:

* Ambient temperatures inside motor housing greater than 125°F may reduce maximum blower performance.

SCALE: Scaled to fit

Blower for:



LABCONCO CORPORATION • KANSAS CITY MO USA 64132
800-821-5525 / 816-333-8811 • labconco.com

Rev _____ Date _____

Date:

Drawing #
177252200

Drawn By:
C. Alumbaugh