

GENERAL DESCRIPTION

Spectrum Exhaust Blower
Coated Steel, 12" inlet
Model # 177250200

Materials of Construction

- Powder-coated steel base with weather cover
- Phenolic coated steel housing for mild or non-corrosive applications
- Phenolic coated, forward-curved impellers

Motor Details

- 2 HP Direct Drive, UL listed, VFD motor
- Thermal overload protection reduces RPM automatically when motor is overloaded.

Motor Setup/Communication

- 3 input options to set motor RPM
 - Manual potentiometer
 - 0-10V
 - 4-20mA
- Motor signal output via RS232 or RS485

Electrical

- 230V, 1ph/3ph, 50/60 Hz

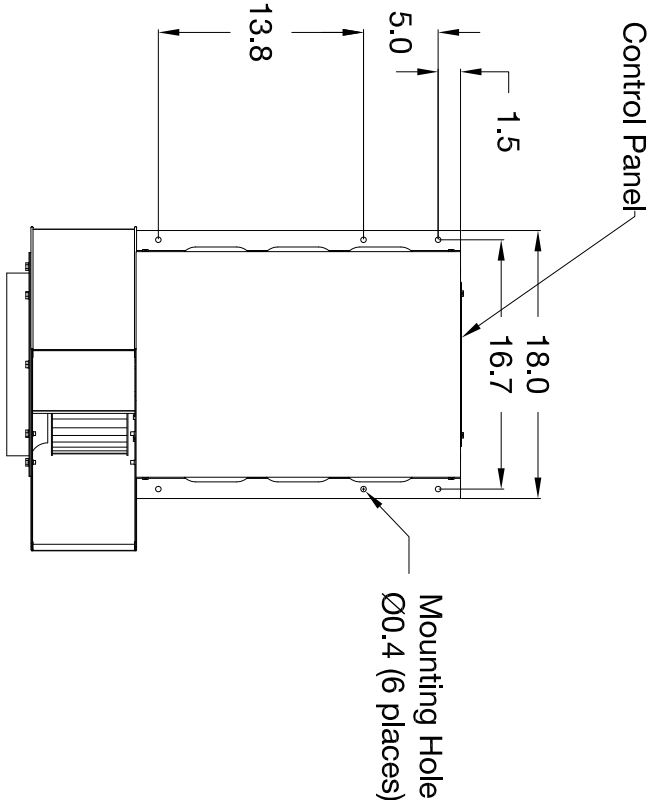
Conforms to:

- ANSI/ASSP Z9.5
- UL listed motor

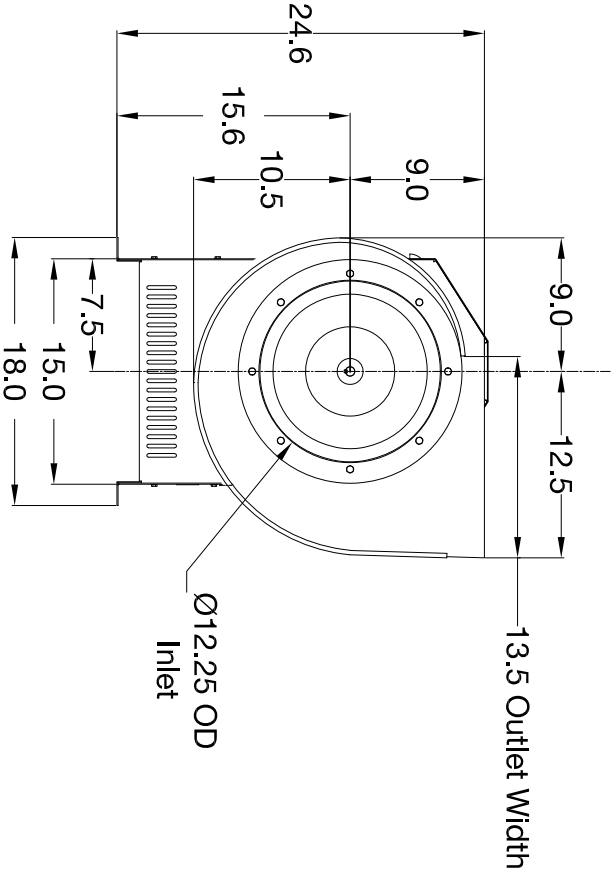
Blower Performance Curve Note:

* Ambient temperatures inside motor housing greater than 125°F may reduce maximum blower performance.

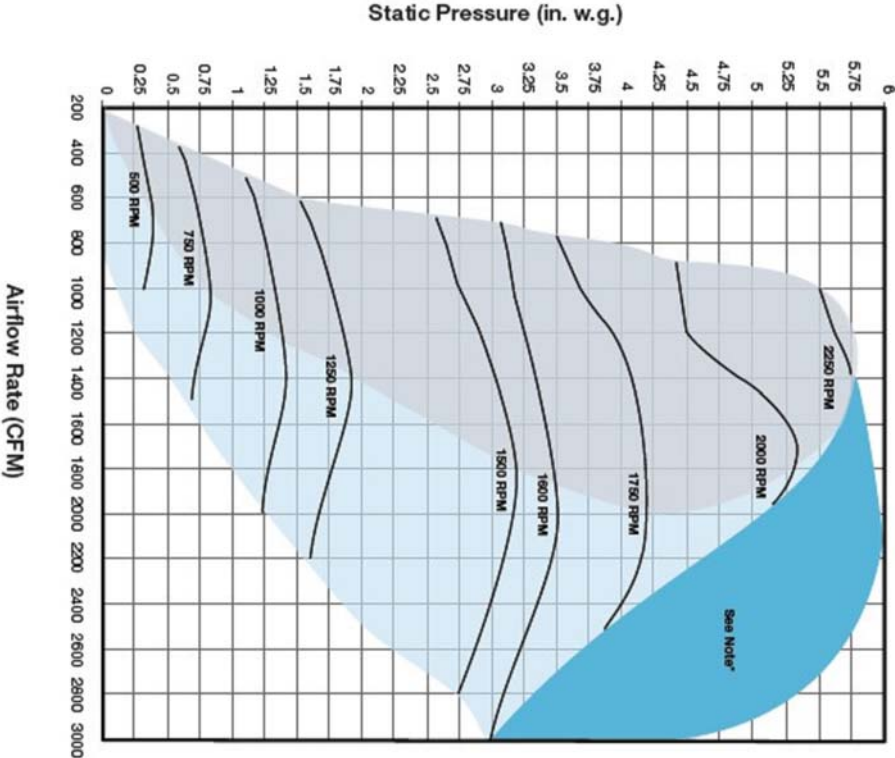
SCALE: Scaled to fit



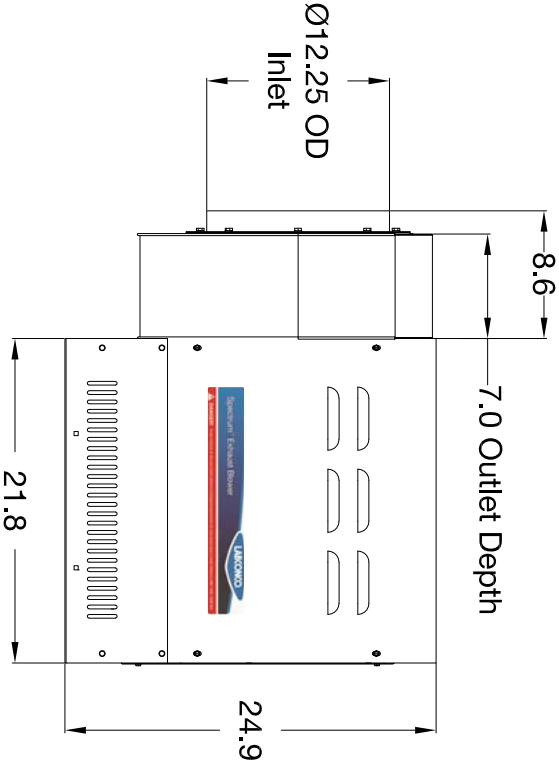
Top View



Front View



Blower Performance Curve



Side View

Blower
for:



LABCONCO CORPORATION • KANSAS CITY MO USA 64132
800-821-5525 / 816-333-8811 • labconco.com

Rev Date

Date:

Drawing #

177250200

Drawn By:

C. Alumbaugh