

GENERAL DESCRIPTION

Spectrum Exhaust Blower  
Fiberglass Reinforced Polyester, 10" inlet  
Model # 177051100

Materials of Construction

- Powder-coated steel base with weather cover
- Fiberglass Reinforced Polyester (FRP) housing for highly corrosive applications
- Injection-molded, Polypropylene, forward- curved, spark resistant impellers
- Non-sparking materials of construction in the airstream making it perfectly suited for applications serving electrically classified spaces.

Motor Details

- 1 HP Direct Drive, UL listed, ECM motor
- Thermal overload protection reduces RPM automatically when motor is overloaded.

Motor Setup/Communication

- 3 input options to set motor RPM
  - Manual potentiometer
  - 0-10V
  - 4-20mA
- Motor signal output via RS232 or RS485

Electrical

- 115V/230V, 1 ph, 50/60 Hz
- Motor has AC select switch for 115V or 230V power. Switch is manufacturer set at 230V but can easily be switched to 115V in the field for install.

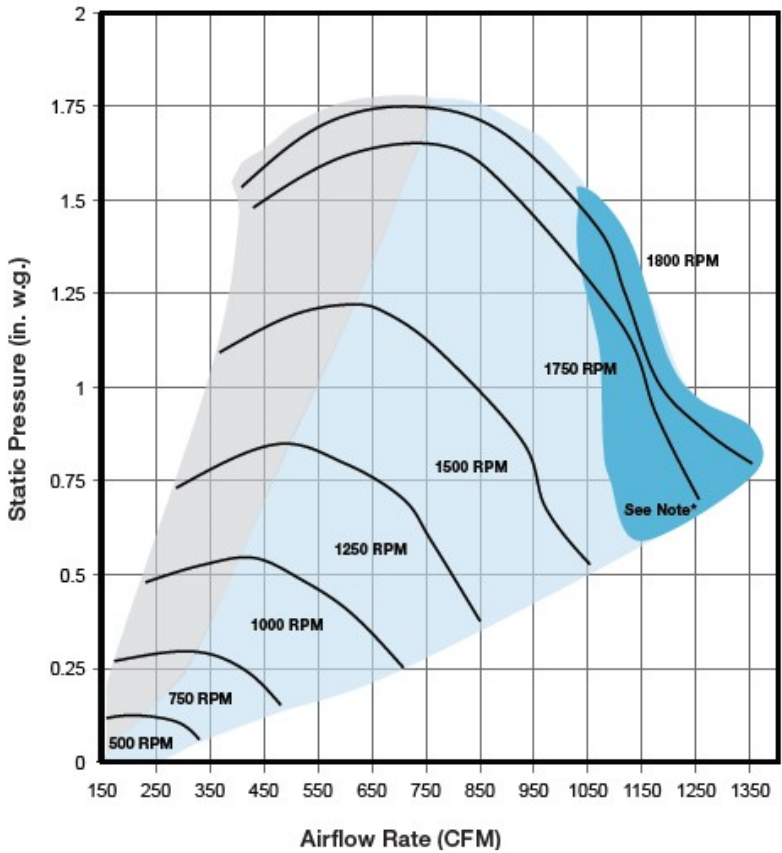
Conforms to:

- ANSI/ASSP Z9.5
- UL listed motor
- AMCA 99

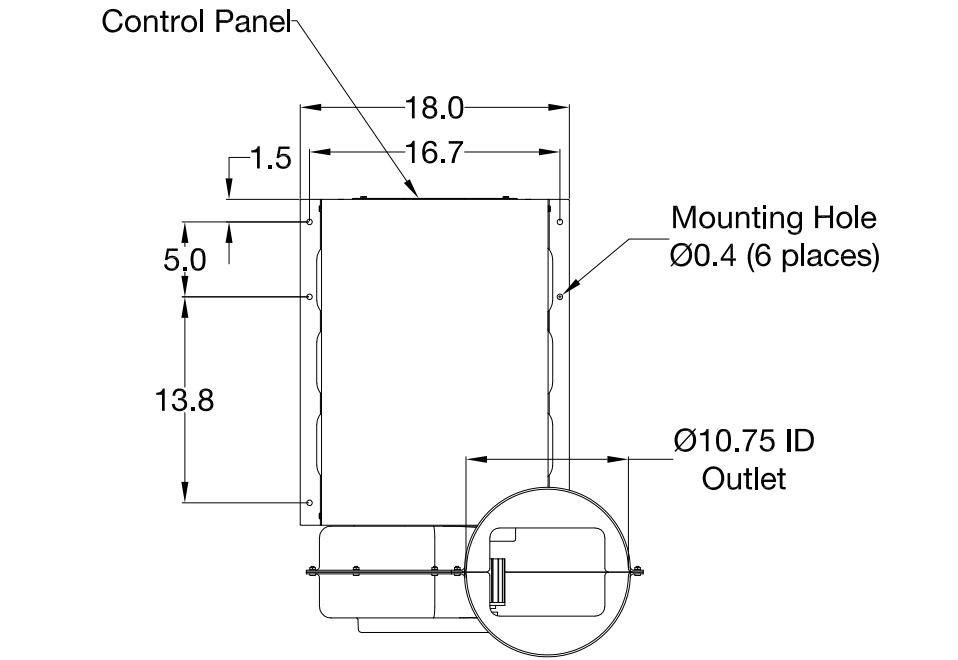
Blower Performance Curve Note:

\*Ambient temperatures inside motor housing greater than 125°F may reduce maximum blower performance.

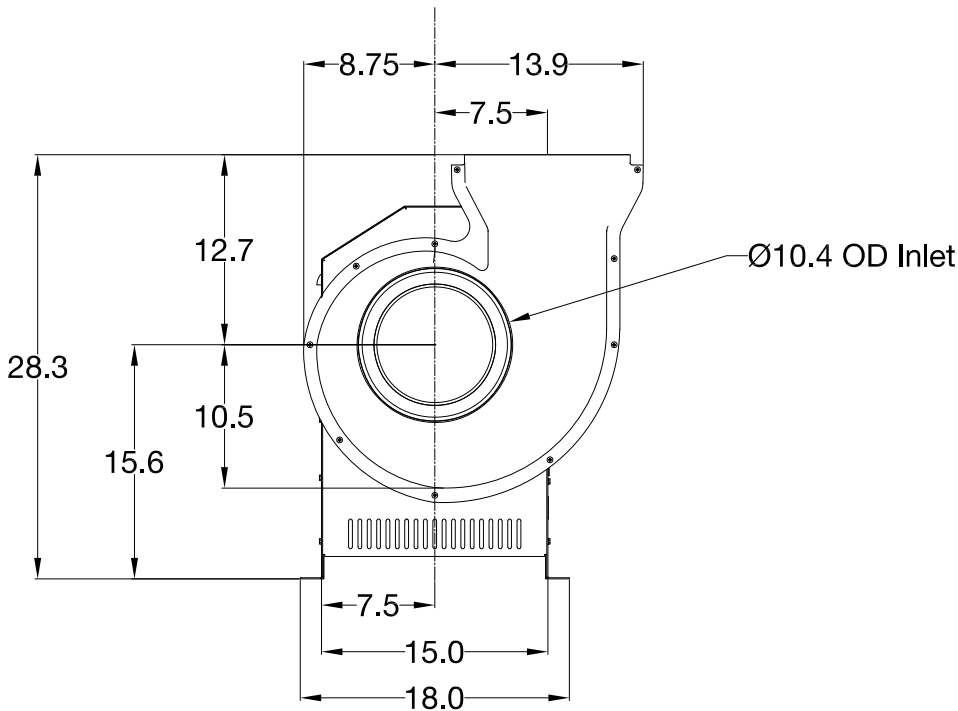
SCALE: Scaled to fit



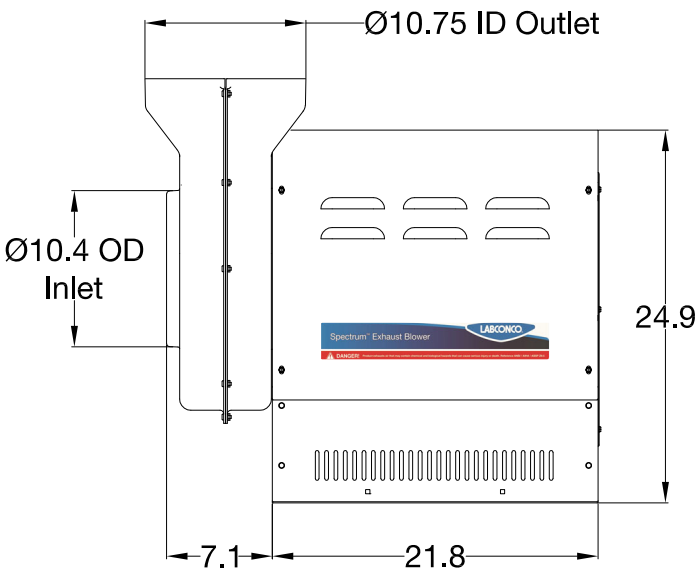
Blower Performance Curve



Top View



Front View



Side View

Blower  
for:



LABCONCO CORPORATION • KANSAS CITY MO USA 64132  
800-821-5525 / 816-333-8811 • labconco.com

Rev	Date

Date:

Drawing #  
177051100

Drawn By:  
C. Alumbaugh