

# PuriCare®

## Laboratory Animal Research Stations



**LABCONCO®**



## Table of Contents

<b>Why Labconco?</b>	3	<b>PuriCare® Procedure Stations</b>	
		Features & Benefits	10
<b>PuriCare® At-a-Glance</b>		Ordering Information	11
Steps to Selecting a	4	Specifications	12
PuriCare® Product Lines	5	Dimensional Data	13
		Accessories	14
<b>PuriCare® Open Access Stations</b>			
Features & Benefits	6	<b>PuriCare® Dual Sided Biosafety Cabinets</b>	
Specifications	7	Specifications & Ordering Information	18
Dimensional Data & Ordering Information	8	Dimensional Data & Accessories	19
Accessories	9		

# Lasting care.

**Safety.** Labconco's vivarium enclosures protect what matters most. Each product within the PuriCare line is engineered to provide unmatched safety for personnel, animals, and procedures. All while protecting the sensitive vivarium environment. We hold ourselves accountable for keeping you and your science safe.

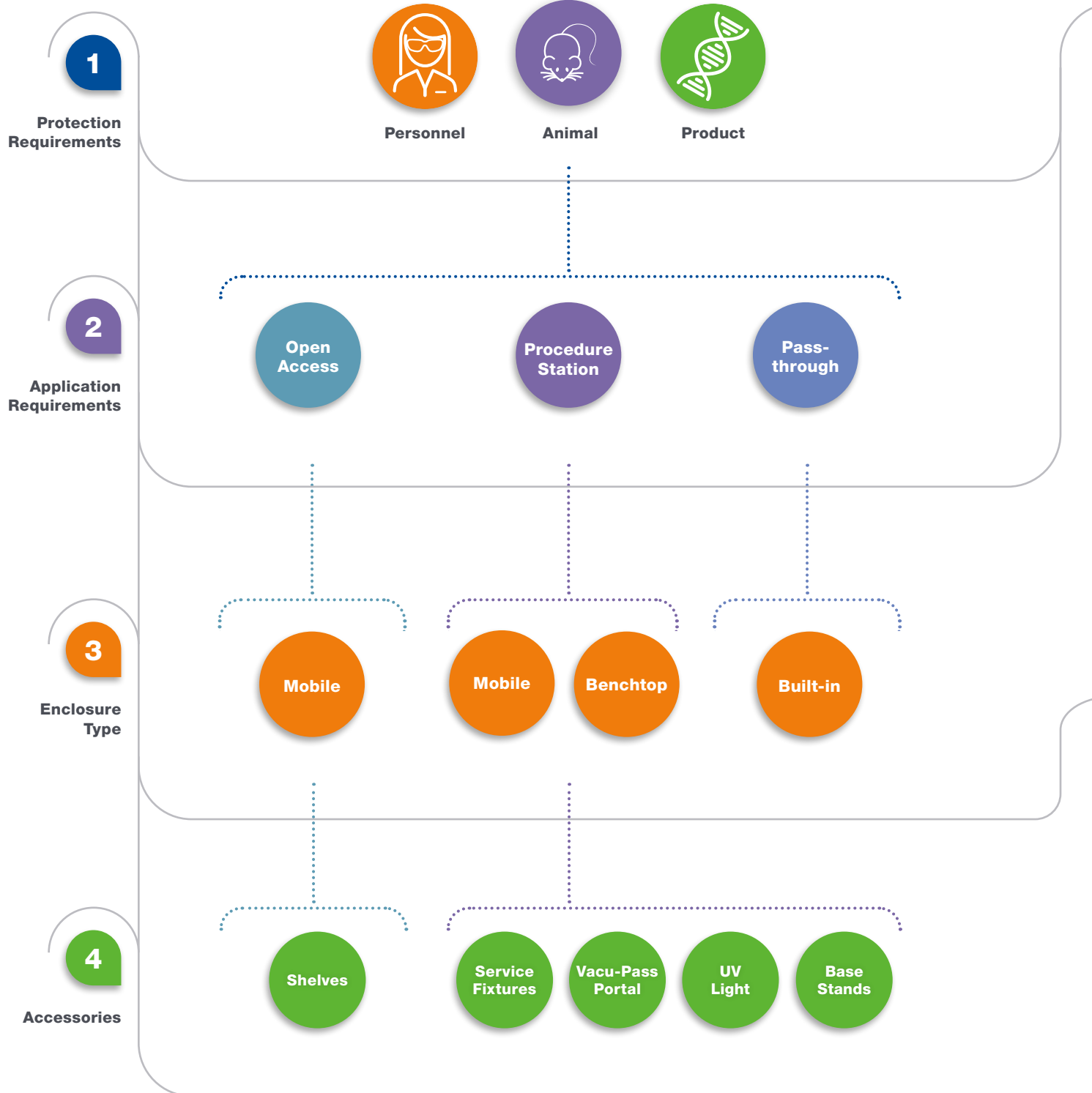
**Flexibility.** From everyday bedding changes to complex surgeries, PuriCare enclosures have your vivarium covered. From mobile stations to custom passthrough biosafety cabinets, we're committed to keeping you comfortable, and your vivarium clean and operating with ease.

**Quality.** Innovation, safety, and reliability have been at the forefront of our designs since 1925. We understand the challenges and demands of the vivarium environment. The quality of our products is the measure of our ability to fulfill our vision for protection of you and your science. It's our commitment to a higher standard, constant vigilance, and endless curiosity in support of your work.



# PuriCare® Animal Research Stations

## Steps to Selecting a PuriCare® Enclosure



# PuriCare® Animal Research Stations

## PuriCare® Enclosures



Open Access



Procedure Station



Pass-through



### Accessory Package



Service Fixture(s)



Vacu-Pass Portal



UV Light



Telescoping Stands



Hydraulic Stands



# PuriCare® Open Access Stations

## Features & Benefits



### Two 99.99% efficient HEPA filters

One located above and one below the work area, trap allergens.

### ISO 5 air

HEPA filtration provides ISO 5 air per ISO 14464-1 & 2.

### Angled sashes

Sash angle provides more ergonomic viewing. 1/4" thick, light-weight polycarbonate sashes are easy to clean.

### Two Minihelic\* pressure gauges

Monitor pressure across the HEPA filters.

### Large 14" (36 cm) high sash openings

Accommodate cages of various sizes. The two-position hinged sashes pivot up to 28" (71 cm) to allow full access from both sides to the interior for cleaning.

### ※ Type 304 stainless steel dished work surface

Holds one liter of liquid and resists corrosion. The work surface may be easily removed for access to a catch pan and prefilters.

### Disposable upper and lower prefilters

Trap large particles to extend HEPA filter life.

### Low exterior height

78.1" (198 cm) height permits passage through standard doorways.

### Single pass airflow design

Helps prevent heat stress and odor build up.

### Retractable power cord (Models 3820000 and 3820010)

Extends up to 26 feet (8 meters) to facilitate mobility. Retraction brake prevents the cord from recoiling.

### Variable speed motor

Designed for low vibration and quiet operation. Speed controls permit adjustment by a qualified technician to prolong filter life.

### Electric hydraulic lift

Infinite working height from 36.5" to 45.0" (93 x 114 cm).

### Push/pull bars

Durable PVC-coated steel tubes with polyamide brackets facilitate transport.

### Large 5" (13 cm) casters

Non-marking polyurethane with toe breaks for easy transportation. Stainless steel bearings are quiet and corrosion-resistant.

### Drain hose

Easily accessible empty liquids that spill into the grilles. The line retracts within the cabinet when not in use.

### Generous work area

Accommodates standard rodent cages.

### Two fluorescent lights

Illuminate the interior and are accessible from either side for replacement.

\*Minihelic® is a registered trademark of Dwyer Instruments Incorporated.

※ Labconco exclusive feature



# PuriCare® Open Access Stations

## Specifications & Ordering Information



### All models feature:

- Nominal downflow velocity of 55 fpm
- ISO 5 (Grade A) air per ISO 14464-1 & 2
- Single pass airflow design
- ✱ Type 304 stainless steel dished removable work surface that holds one liter of liquid
- Electric hydraulic lift to allow infinite working height adjustment from 36.5" to 45.0" (93 x 114 cm) with the push of a button
- Two recessed and angled sashes, 1/4" clear polycarbonate with bottom edges that angle inward. The two-position hinged sashes have 14" (36 cm) working height opening and pivot up to 28" (71 cm) for loading and cleaning
- 5" (13 cm) diameter, non-marking polyurethane casters with locks and stainless steel bearings
- Two Minihelic pressure gauges
- Two fluorescent lights, 25 watt on 4' models and 32 watt on 5' models
- ADA-compliant light and blower switches
- ADA-compliant electrical duplex with ground fault interruption and splash cover
- Two 99.99% efficient HEPA filters
- Disposable upper and lower prefilters
- Variable speed motor and impeller with speed controls

- Glacier white and slate gray powder-coated steel exterior
- Two push/pull bars of PVC-coated steel tubes with polyamide brackets on right side
- Retractable drain hose
- ✱ Factory prepared to accommodate up to six accessory shelves
- Three year limited warranty on parts and labor

### Models conform to the following regulations and standards:

- UL Standard 3101/61010-1 (115 volt models)
- CAN/CSA C22.2 No. 1010.1-92 (115 volt models)
- CE Conformity Marking (230 volt models)

### Models 3820000, 3820001, 3820010 and 3820011 also include:

- Retractable, 26' (8 m), 3-wire safety orange power cord with retraction brake and plug

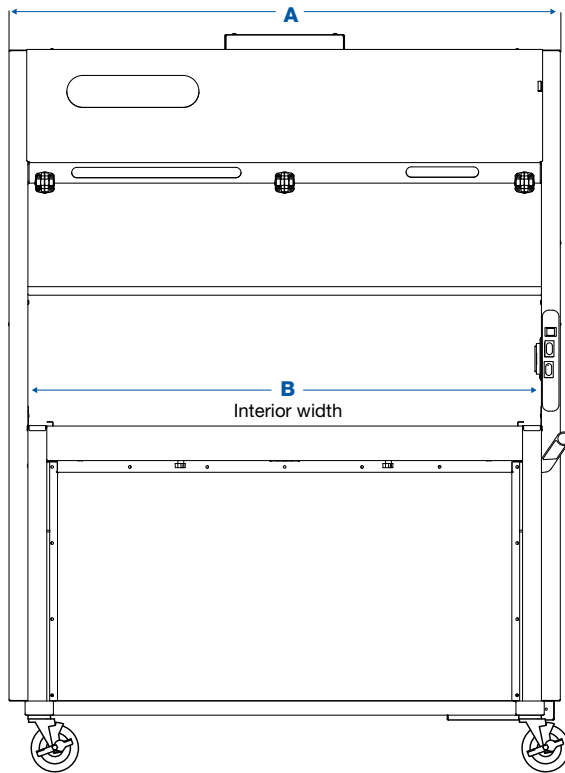
### Models 3820020, 3820021, 3820023, 3820024, 3820026, 3820028, 3820033, 3820034, 3820036 and 3820038 also includes:

- 10' (3 m) 3-wire cord. **A 230 volt plug is required.**

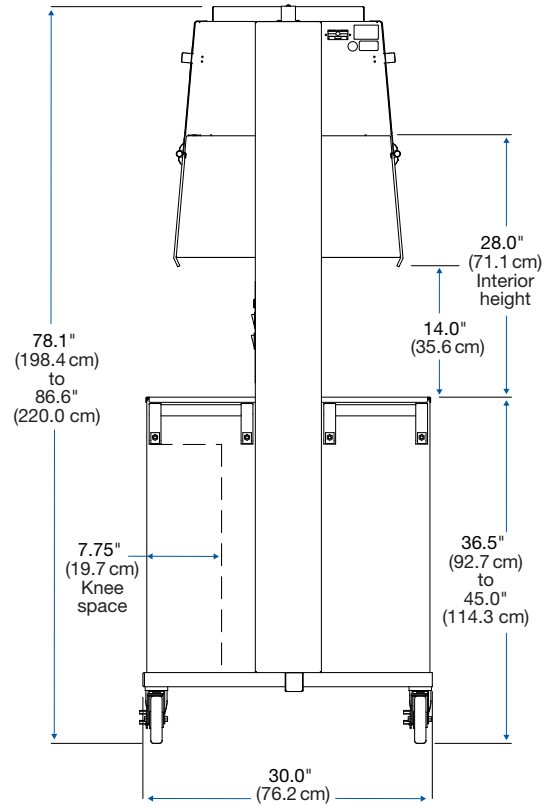


# PuriCare® Open Access Stations

## Dimensional Data & Ordering Information



Nominal Width	A	B
4'	48.4" (123.0 cm)	44.4" (123.0 cm)
5'	58.4" (148.3 cm)	48.5" (123.2 cm)



Catalog Number	Nominal Width	Work Surface Dimensions	Electrical Requirements	Plug Type	Shipping Weight
<a href="#">3820001</a>	4'	38.0" w x 22.5" d (96.5 x 57.2 cm)	115 volts, 60 Hz, 12 amps	115 volts, 15 amps	598 lbs. (271 kg)
<a href="#">3820011*</a>			100 volts, 50/60 Hz, 12 amps	100 volts, 15 amps	
<a href="#">3820021</a>			230 volts, 50/60 Hz, 6 amps	North America, 230 volts	
<a href="#">3820023*</a>				Schuko	
<a href="#">3820024*</a>				British (UK)	
<a href="#">3820026*</a>				China/Australia	
<a href="#">3820028*</a>				India	
<a href="#">3820000</a>	5'	48.0" w x 22.5" d (121.9 x 57.2 cm)	115 volts, 60 Hz, 12 amps	115 volts, 15 amps	600 lbs. (273 kg)
<a href="#">3820010*</a>			100 volts, 50/60 Hz, 12 amps	100 volts, 15 amps	
<a href="#">3820020</a>			230 volts, 50/60 Hz, 6 amps	North America, 230 volts	
<a href="#">3820033*</a>				Schuko	
<a href="#">3820034*</a>				British (UK)	
<a href="#">3820036*</a>				China/Australia	
<a href="#">3820038*</a>				India	

\* International electrical configuration

\* Labconco exclusive feature



# PuriCare® Open Access Stations

## Accessories



**3805000—Push/Pull Bars.** Additional set of push/pull bars for mounting on the left hand side of the Open Access Station. PVC coated steel tubes with polyamide brackets. Shipping wt. 5 lbs. (2.3 kg)

**3824000—Rodent Barricade.** Prevents renegade rodents from escaping during cage changing operations. Three 10" (25 cm) high, hinged acrylic panels have tabs that fit into grille perforations on one side of the Station so that operator may work from the opposite side. Shipping weight 2 lbs. (0.9 kg)



**Shelves.** 11.4" w x 14.0" d x 0.75" thick (29 x 36 x 2 cm). Shelf mounts on exterior front, or back, to provide flat surface to accommodate small items. Laminated, solid phenolic shelf holds loads up to 20 pounds, has a trigger to release the shelf and folds flat when not in use. Available for mounting on left hand or right hand side of enclosure. Open Access Station is factory-prepared to accept two shelves on each the right and left side. Shipping weight 10 lbs. (4.5 kg)

Catalog Number	Description
<b>3794901</b>	Shelf Kit, Right Side Installation
<b>3794900</b>	Shelf Kit, Left Side Installation



**3794902—End Shelf.** 30.0" w x 14.0" d x 0.75" thick (76 x 36 x 2 cm). Shelf mounts to either end to provide flat surface to accommodate small items. Laminated, solid phenolic shelf holds loads up to 20 pounds, has a trigger to release the shelf and folds flat when not in use. Shipping weight 20 lbs. (9 kg)



**Replacement Prefilters.** Pleated Air Filter. One each. The PuriCare Open Access Station requires two each exhaust and two each supply prefilters. Shipping weight 1 lb (0.5 kg)

Catalog Number	Nominal Width	Description	Quantity Required	Dimensions
<b>3768902</b>	4'	Exhaust	2	17.75" x 12.75" (45 x 32 cm)
<b>3768902</b>	4'	Supply	2	17.75" x 12.75" (45 x 32 cm)
<b>3789300</b>	5'	Exhaust	2	20.0" x 20.0" (51 x 51 cm)
<b>3768900</b>	5'	Supply	2	18.0" x 18.0" (46 x 46 cm)

# PuriCare® Procedure Stations

## Features and Benefits

### Class II Airflow

Provides personnel, product, and environmental protection from hazardous pathogens and particles.

### Type A2

- Approximately 70% Recirculated, 30% Exhausted
- Recirculating or Canopy Ducted

### NSF 49 Listed

Each Labconco Class II BSC exceeds globally recognized performance and construction requirements.

### Vivarium-ready

Large 10" or 12" sash opening for cages. Plus, a standard easy-change prefilter traps dander and particulates to extend HEPA filter life.

### HEPA Filtration

Dual filters are 99.99+% efficient (at 0.3 microns), providing ISO 5 or better air.

### Sustainable Design

Each cabinet is constructed with more than 70% recycled materials. An ECM motor and LED lighting consume as little as 200 watts.

### Constant Airflow Profile™

Continuously monitors and maintains inflow and downflow to protect users and samples.

### ECM Blower

Uses minimal energy, is quieter, and provides constant airflow with CAP™.

### Inclination Technology

A sloped sash, curved airfoil free of armrests, large working area, and eye-level display maximize comfort.

### MyLogic™ OS

Conveniently displays cabinet information on line-of-sight screen.

### Easily Cleanable

304 Stainless Steel interior withstands routine disinfection. Coved corners and dished work surface are easily cleanable.

### Unitized Construction

A welded 304 Stainless Steel cabinet hull, dished work surface, and solid steel plenum are built to last.



## MyLogic™ OS Information Center



### LCD Display

Clearly visualizes cabinet conditions in eight languages.

### Filter Life Indicator

Accurately displays remaining HEPA filter life. Alerts users at 20% and 10% before alarming at 0%.

### Blower Status

Displays when blower is turned On, in Night-Smart mode, or Off.

### Alerts & Alarms

Visual and audible signals notify users of unsafe cabinet conditions.

### Interface Convenience

MyLogic includes a built-in UV timer, Smart-Start™, 8 languages and a full certification menu.

### Data Connectivity

Exports system information via USB or dry contact relays for remote monitoring.



# PuriCare® Procedure Stations

## Ordering Information

### Catalog Number Configurator:

Use this key to configure the nine digit catalog number to order your PuriCare Procedure Station Class II, Type A2 Biosafety Cabinet.

3 1 2    0

Select the **WIDTH** of your cabinet. This is the fourth digit of your catalog number.

4 = 4'    5 = 5'    6 = 6'

Select the working **SASH OPENING HEIGHT**. This is the fifth digit of your catalog number.

1 = 10" (25.4 cm)    2 = 12" (30.5 cm)

Select the **ACCESSORY PACKAGE** option: service fixture(s), UV lamp and Vacu-Pass™ Cord & Cable Portal. This is the sixth digit of your catalog number.

0 = None

1 = Includes a right-side mounted factory-installed service fixture (two on 6' models, one on each side), UV lamp with timer, and right-side wall Vacu-Pass Portal.

Select the **ELECTRICAL CONFIGURATION** and **PLUG TYPE**. These are the eighth and ninth digits of your catalog number.

01 = 115V, 60 Hz, 15/20A, with plug for North America

11 = 230V, 50/60 Hz, with plug for North America

21 = 100V, 50/60 Hz, 15/20A, with plug for Japan

31 = 230V, 50/60 Hz, with Schuko plug

41 = 230V, 50/60 Hz, with plug for China/Australia

51 = 230V, 50/60 Hz, with plug for Great Britain (UK)

71 = 230V, 50/60 Hz, with plug for India

### Plug Configurations



115V, 15A  
for North America  
100V, 15A for Japan  
(4'\* widths)



115V, 20A  
for North America  
100V, 20A for Japan  
(4', 5' and 6' widths)



230V  
for North America



230V  
Schuko



230V  
for China/Australia



230V  
for Great Britain (UK)



230V  
for India

### Technical Specifications

Nominal Width	Energy Requirements** (Dedicated, non-GFI outlet required)				Shipping Weight	Shipping Weight with Stand
	100V or 115V	230V	10"	12"		
4'	12A	6A	294	-	607 lbs. (275 kg)	808 lbs. (367 kg)
4'*	16A	8A	-	351	607 lbs. (275 kg)	808 lbs. (367 kg)
5'	16A	8A	355	391	715 lbs. (324 kg)	953 lbs. (432 kg)
6'	16A	8A	573	504	805 lbs. (365 kg)	1091 lbs. (495 kg)

\*4' 12" sash models require 20A circuit and plug configuration

\*\*Acceptable voltage range +/-10% nominal value.

# PuriCare® Procedure Stations

## Specifications



### All models feature:

- Electronically Commutated Motor (ECM)
- Nominal downflow velocity of 55 fpm (models with 10" sash opening) and 60 fpm (models with 12" sash opening). Nominal inflow velocity of 105 fpm (0.53 m/sec)
- Removable towel catch with washable screen-type prefilter located under work surface
- \* Constant Airflow Profile™ (CAP) airflow monitoring system
- Intrinsically-safe negative pressure design
- \* Air-Wave™ Entry System at access opening to enhance containment
- \* Contain-Air™ Negative Pressure Channel at top of sash to enhance containment
- Fully scannable 99.99+% supply and exhaust HEPA filters, 99.999% efficient ULPA filters available
- \* MyLogic™ Operating System and interior-mounted, line-of-sight, full color, easy-to-understand LCD information center with:
  - Smart-Start™ System user-programmable start up and shut down operations
  - Night-Smart™ System for idling the blower when the sash is fully closed
  - “Filter Life Remaining” bar graph and numeric value displayed for easy HEPA filter monitoring
  - Status line for alarm conditions and alerts to warn when filter life diminishes to 20% and 10% before alarming at 0%
  - Interval/elapsed timer for experiment monitoring
  - UV light timer (on models with UV)
  - Digital clock
  - 8 Languages

\* Labconco exclusive feature

- Bright, glare-free LED lighting up to 156 foot-candle (1679 lux). Located outside the contaminated work area
- 10° angled, fully closing sash. 1/4" tempered safety glass with counterbalanced, anti-racking, easy-to-lift mechanism
- \* Curved waterfall design stainless steel inlet grille with Reserve-Air Secondary Airflow Slots
- \* Two electrical duplex outlets. Flush-mounted-stainless steel with dampened hinges. Single outlets on 230V models. One outlet on each side, with ground fault interruption (115V). Maximum total amperage draw of 5A (100-115V models) or 3A (230V models)
- Leak-tight stainless steel interior. Powder-coated steel exterior
- Electronic security lock (optional activation) that requires access code to operate the cabinet
- 10" or 12" (25.4 or 30.5 cm) working sash height
- \* 22.5" (57 cm) max. sash opening & 27.0" (69 cm) viewing height
- ADA-Compliant touchpad control on right side post
- Removable, seamless type 304 stainless steel, dished work surface with lift out knobs
- Approximately 70% air recirculation
- 10' (3 m) power cord with plug
- Five year warranty

### Models conform to the following standards:

- NSF/ANSI Standard 49 listed
- NSF/ANSI 49 compliant
- ISO 5 (Grade A) per ISO 14464-1 & 2
- UL Standard 61010-1
- CAN/CSA 22.2 No. 61010-1
- CE Mark (230V models)
- ADA-compliant (controls and receptacles)

### Options include:

- Accessory Package: UV lamp (254 nm), service fixture(s) with ball-type valve(s) and Vacu-Pass™ Cord & Cable Portal
- Ventus Canopy Connection: See page 17

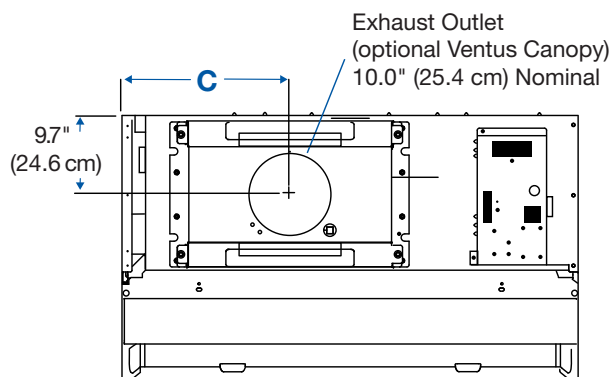
### All models require (not included):

- Supporting Base Stand: See page 16

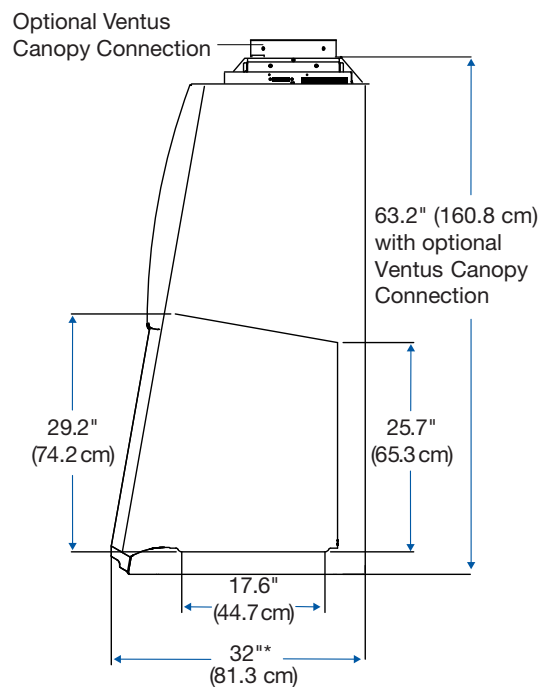
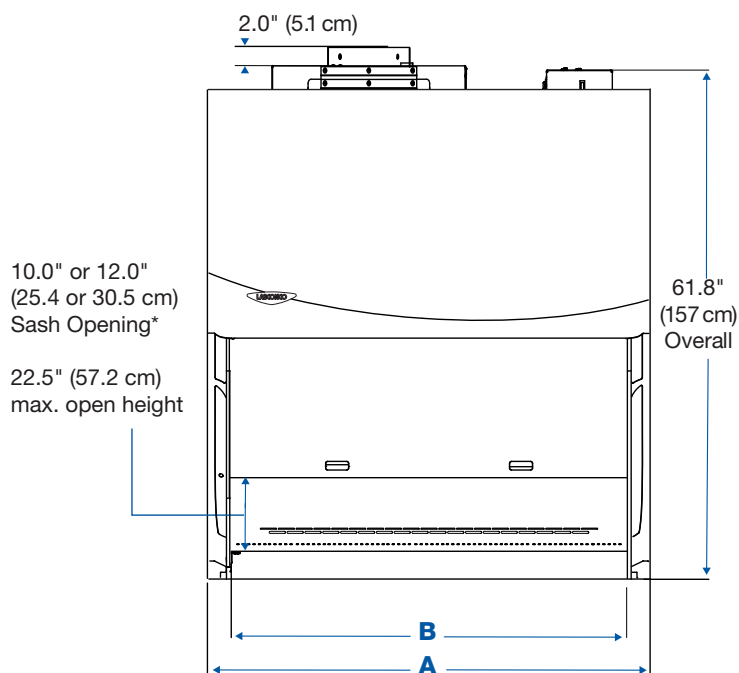


# PuriCare® Procedure Stations

## Dimensional Data



Nominal Width	A	B	C
4'	54.3" (137.9 cm)	48.5" (123.2 cm)	19.9" (50.5 cm)
5'	66.3" (168.4 cm)	60.5" (153.7 cm)	26.9" (68.3 cm)
6'	78.3" (198.9 cm)	72.5" (184.2 cm)	32.9" (83.6 cm)



\*Models with 12" sash opening are 32.7" deep.



# PuriCare® Procedure Stations

## Accessories

### 3744000—Ergonomic Chair

**with Armrests.** 6-way articulating seat for personalized comfort. Seat height adjusts from 18.25" to 25.75" (46 x 65 cm). Five-leg reinforced composite base with ball-bearing casters and aluminum support ring. Removable armrests. Black vinyl upholstery. **⚠WARNING:** Cancer - P65Warnings.ca.gov (California only). Shipping weight 43 lbs. (20 kg)

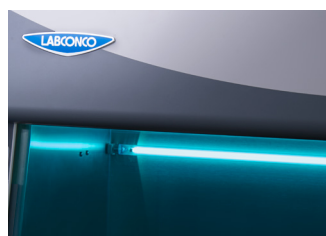


### 3746000—Adjustable

**Footrest.** Ergonomic design reduces strain and fatigue while working. 18.5" w x 11.5" d x 8.0" h (47 x 29 x 20 cm). Shipping weight 6.0 lbs. (2.7 kg)



**8022000—Logic Cart.** HDP and ABS construction. Overall dimensions: 25.0" w x 19.0" d x 27.0" h (64 x 48 x 69 cm). Shipping weight 71 lbs. (32 kg)



### Ultraviolet Lamp Kits.

Include 254 nm UV lamp and ballast. **Installation required.**



### 3747500—Service Fixture

**Kit.** Includes serrated hose tip with ball valve, quarter turn control handle and hardware. Mounts on left or right side interior. Cabinets are factory-prepared for up to four fixtures. **Installation required.** Shipping weight 2.0 lbs. (0.9 kg)



### 3402800—Vacu-Pass Cord & Cable Portal Kit.

NSF-approved portal allows passage of a cable through right-side wall. Accommodates cords/cables with dia. of 1/8", 1/4", 3/8" and 1/2", and blank plug. **Installation required.** Shipping weight 1.0 lbs. (0.5 kg)



**3145000—Electronics Mount.** Provides a solid attachment point for a camera onto a Labconco Class II BSC. The articulating design includes 4-way movement and a 1/4" tripod mount to accommodate a variety of devices. Includes optional display screen for use with a projector. Attaches to BSC frame. **Installation required.** Shipping weight 6 lbs. (2.7 kg)



### 3405500—Inflow and

**Downflow Sensor Kit.** Allows display of inflow and downflow velocities on LCD screen. Includes sensor, wiring harness and hardware. **Installation and certifier calibration required.** Shipping weight 2.0 lbs. (0.9 kg)

Catalog Number	Description	Shipping Weight
3858500	115V	5.0 lbs. (2.3 kg)
3858501	100V	5.0 lbs. (2.3 kg)
3858502	230V	5.0 lbs. (2.3 kg)

# PuriCare® Procedure Stations

## Accessories



### Easy-Clean Prop Rods.

Holds the worksurface in a raised position for easy cleaning of the sump area on PuriCare Procedure Stations. Short version for use with Procedure Stations with service fixtures, Long version for use with non-fixtured Procedure stations.

Catalog Number	Includes	Dimensions (l x w x h)	Shipping Weight
<b>3430500</b>	Easy-Clean Prop Rod, Short	7" x 3.25" x 2.75"	5 lbs. (2.3 kg)
<b>3430501</b>	Easy-Clean Prop Rod, Long	8.5" x 3.25" x 2.75"	5 lbs. (2.3 kg)

**Disposable Replacement Prefilters.** Merv 8 rating. Prefilter, for installing on the towel catch. **Installation is required.**

Catalog Number	For Use With Cabinet Width	Shipping Weight
<b>3406201</b>	4'	5.0 lbs. (2.3 kg)
<b>3406202</b>	5'	6.0 lbs. (2.7 kg)
<b>3406203</b>	6'	7.0 lbs. (3.2 kg)

**3852000—Turntable.** "Lazy Susan" rotates 360° to bring items within easy reach. Stainless steel surface and ball bearings. 12" (30 cm) dia. Autoclavable. Shipping weight 6.0 lbs. (2.7 kg)



**Trace Odor Filter Starter Kit and Replacement Filters.** For filtration of nuisance and non-hazardous odors. Not for use with hazardous/corrosive chemicals. **Installation is required.**

Kit Catalog Number	Replacement Prefilter Catalog Number	Cabinet Width	Shipping Weight
<b>3456101</b>	<b>3435601</b>	4'	17 lbs. (7.7 kg)
<b>3456102</b>	<b>3435602</b>	5'	19 lbs. (8.6 kg)
<b>3456103</b>	<b>3435603</b>	6'	23 lbs. (10.4 kg)



### 3859100—Cord Manager.

Includes three stainless steel hooks and carabiners. Mounts to rear grille. Shipping weight 2.0 lbs. (0.9 kg)



### 3859000—Interior Shelf.

Stainless steel shelf, 8.0" x 5.0" (20 x 13 cm), mounts to rear grille. Capacity: 2.2 lbs. (1 kg). Shipping weight 2.0 lbs. (0.9 kg)

### 3408500—Sash-Glider Kit.

Cleans both sides of sash while cabinet is closed to avoid contamination risks. Includes two microfiber sheets and ten disposable scrubbing strips. Shipping weight 5.0 lbs. (2.0 kg). Replacement strips, (3408600) package of 25. Shipping weight 2.0 lbs. (0.9 kg)



**IV Bar Kits.** Include IV bar, mounting hardware and four hangers. **Installation is required.**

Catalog Number	For Use With	Shipping Weight
<b>3858601</b>	4'	4.0 lbs. (1.8 kg)
<b>3858602</b>	5'	5.0 lbs. (2.3 kg)
<b>3858603</b>	6'	6.0 lbs. (2.7 kg)

# PuriCare® Procedure Stations

## Accessories

### Electric & Manual Hydraulic Lift Base Stands.

Hydraulic lift system allows infinitely adjustable height from 25.5" to 33.5" (65 x 85 cm). Depth is 29.0" (74 cm) at the top and 34.3" (87 cm) at the base. ADA-compliant. Support loads up to 1000 pounds. Durable 1.75" (4 cm) tubular, glacier white powder-coated steel frame with rear cross bar supports. Sub-frame is 2.0" x 3.0" (5 x 8 cm). Electric models include left hand side up/down switch. Manual models include left hand side hand crank that may be disengaged and folded under when not in use.



### Telescoping Base Stands.

Adjustment to eight height positions in 1" (2.5 cm) increments from 27.5" to 34.5" (70 to 88 cm). ADA-compliant. Support loads up to 1000 pounds. Powder-coated tubular steel frame with 9" shelf. Fixed leveling feet.



**SoLo™ Hydraulic Lift Base Stands.** Hydraulic lift system lowers the Procedure Station for transport through standard doorways as low as 78" (198 cm) high. ADA compliant. Infinitely adjustable work surface heights from 17.2" to 36.8" (44 to 93 cm) and overall enclosure height as low as 76.2" (194 cm). Support loads up to 1000 pounds (454 kg). Durable glacier white powder-coated steel. 5" (13 cm) diameter, toe-locking, nonmarking polyurethane casters with bearings for quiet operation. Two PVC-coated tubular steel handle bars with polyamide brackets on each side.

Catalog Number	Nominal Width	Description	Shipping Weight
<b>3780101</b>	4'	Electric. 115V, 60 Hz, 2.4A	180 lbs. (82 kg)
<b>3780104*</b>		Electric. 230V, 50/60 Hz, 0.8A	
<b>3780201</b>		Manual	
<b>3780106</b>	5'	Electric. 115V, 60 Hz, 2.4A	195 lbs. (88 kg)
<b>3780107*</b>		Electric. 230V, 50/60 Hz, 0.8A	
<b>3780203</b>		Manual	
<b>3780102</b>	6'	Electric. 115V, 60 Hz, 2.4A	220 lbs. (100 kg)
<b>3780105*</b>		Electric. 230V, 50/60 Hz, 0.8A	
<b>3780202</b>		Manual	
<b>3784000</b>		Caster Kit	10 lbs. (5 kg)

Catalog Number	Nominal Width	Shipping Weight
<b>3401004</b>	4'	125 lbs. (57 kg)
<b>3401005</b>	5'	157 lbs. (71 kg)
<b>3401006</b>	6'	
<b>3730500</b>	Caster Kit	10 lbs. (5 kg)

Catalog Number	Nominal Width	Exterior Width	Electrical Requirements	Plug Type	Shipping Weight
<b>3780311</b>	4'	65.5" (166.4 cm)	115V, 50/60 Hz, 2A	115V, 15A	420 lbs. (190 kg)
<b>3780315</b>				230V for North America	
<b>3780331</b>			230V, 50/60 Hz, 3A	230V for British (UK)	
<b>3780335</b>				230V Schuko	
<b>3780339</b>				230V for China/Australia	
<b>3780312</b>	5'	77.5" (197 cm)	115V, 50/60 Hz, 2A	115V, 15A	460 lbs. (209 kg)
<b>3780316</b>				230V for North America	
<b>3780332</b>			230V, 50/60 Hz, 3A	230V for British (UK)	
<b>3780336</b>				230V Schuko	
<b>3780340</b>				230V for China/Australia	
<b>3780313</b>	6'	89.5" (227.3 cm)	115V, 50/60 Hz, 2A	115V, 15A	500 lbs. (227 kg)
<b>3780317</b>				230V for North America	
<b>3780333</b>			230V, 50/60 Hz, 3A	230V for British (UK)	
<b>3780337</b>				230V Schuko	
<b>3780341</b>				230V for China/Australia	

# PuriCare® Procedure Stations

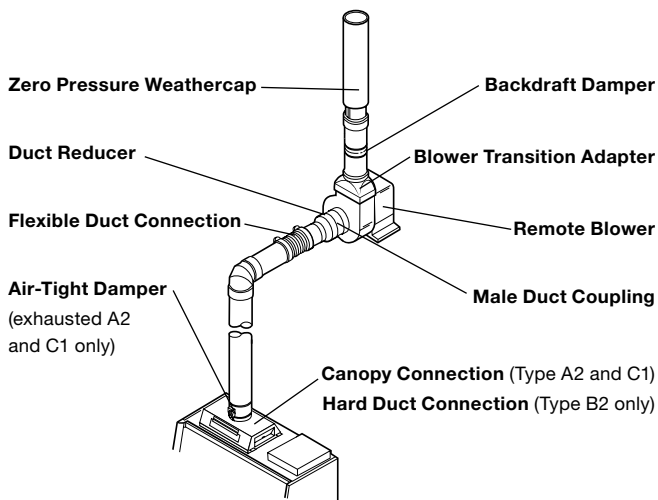
## Accessories



**Ventus Canopy Connection.** For thimble exhausting PuriCare Procedure Stations. NSF approved design detects insufficient exhaust in less than one second and signals MyLogic OS with visual and audible alarms. Alarm increases motor to maximum speed for personnel safety. Adds only 1.4" (3.6 cm) to cabinet height. Powder-coated steel. Collar is 10" (25.4 cm) ID. Exhaust connection is required. **Air-tight Damper (3776800) recommended.** Contact Labconco for information on factory installation. Shipping weight 75 lbs. (34 kg)

Catalog Number	For Use With	Required Exhaust Volume (CFM)* @ 0.15" w.g.	
		10" Sash Opening	12" Sash Opening
3889201	4'	444	521
3889202	5'	540	638
3889203	6'	637	755

### Typical Cabinet Exhaust System



\*Requires vacuum of 0.15" w.g. at duct connection. Exhaust volumes obtained via Pitot tube traverse and include 50 CFM room air. Actual volume may be lower using Direct Inflow Measurement methodology.

\*\*Always verify exhaust system requirements before purchasing. Contact Labconco for assistance.

### 7034200—Flex Duct Connection.



Catalog Number	Length	Shipping Weight
7034800	1'	5 lbs (2.3 kg)
7034801	3'	10 lbs (4.5 kg)
7034802	6'	15 lbs (6.8 kg)
7034803	10'	25 lbs (11.3 kg)

**3776800—Air-Tight Damper.** Mounts atop Ventus Canopy to adjust exhaust airflow and closes for decontamination procedures. Manually adjustable. Type 304 stainless steel. 10" (25.4 cm) high with 10" (25.4 cm) dia. OD inlet & outlet. Shipping weight 14 lbs. (6.3 kg)



**3858800—Backdraft Damper.** Mounts in vertical duct run to prevent reversal of flow of the exhaust system. 3.0" (8 cm) high with 10" (25.4 cm) dia. OD inlet and outlet. Shipping weight 2.0 lbs. (0.9 kg)



### 3858320—Dry Contact Relay Kit.

Connects Procedure Station to remote blower or building monitoring system. Includes outputs for blower, Night-Smart, and alarm status. Shipping weight 1.0 lb (0.5 kg)



**Remote Blowers. Recommended for canopy-ducted PuriCare Procedure Stations.** Phenolic-coated impeller and housing, powder-coated steel base and weather cover, belt-drive motor with adjustable sheave and self-adjusting gravity belt tightener. Contact Labconco for dimensions, questions about blower sizing and other blowers available.



Catalog Number	For Use With**	Electrical Requirements	HP	Shipping Weight
7068000**	4'	115V, 60 Hz, 1 phase, 4.0A	1/6	92 lbs. (42 kg)
7068200**	5' & 6'	115V, 60 Hz, 1 phase, 4.4A	1/4	92 lbs. (42 kg)

### Blower Dimensions

7068000 & 7068200	
Inlet	10.87" (27.6 cm) ID
Outlet	10.0" w x 5.5" d (25.4 x 14 cm)
Blower Transition Adapter Required	4722401

# PuriCare® Dual Sided Biosafety Cabinets

## Specifications & Ordering Information



### All models feature:

- Nominal inflow velocity of 105 feet per minute (fpm) at 12" high sash opening
- Nominal downflow velocity of 55 fpm
- ISO 5 (Grade A) air per ISO 14644-1 & 2
- Intrinsically-safe negative pressure design
- \* Contain-Air™ Negative Pressure Channel
- Two 99.99% efficient HEPA filters (one supply and one exhaust)
- Prefilters below the work surface to remove large particles and prolong HEPA filter life

- Two ECM blowers with automatic speed compensation
- Lower-mounted motor/blower with voltage-compensating speed controls
- Type 304 stainless steel diffuser and removable work surface
- Stainless steel and glacier white powder-coated steel exterior
- Fully-closing, 1/4" thick tempered safety glass sashes with anti-racking mechanism and 17.75" (45 cm) loading height opening
- Two "clean side"-mounted, Minihelic\* pressure gauges for monitoring differential pressure across the upper and lower HEPA filters
- Two 25-watt fluorescent lights
- Airflow monitor mounted on "clean side" with three-light indicator and audible/visual alarm
- Light and blower switches operable from either side
- Audible/visual sash alarms mounted on both sides that alert the operator when both sashes are open
- Two interior-mounted electrical duplexes with ground fault interruption and splash covers
- 12" ID outlet for exhaust through a canopy to the outside or vent back into facility
- Single point top-mounted internal junction box for hard wiring by a qualified electrician
- Designed to seal to the floor for efficient through-the-wall installation
- Stainless steel mounting angles and panels to finish and seal gaps between the wall and exterior of the cabinet
- Full three year limited warranty on parts and labor (excluding filters)

Catalog Number	Electrical Requirements	Shipping Weight
3230001	115 volts, 50/60 Hz, 30 amps	950 lbs. (431 kg)
3230021	230 volts, 50/60 Hz, 15 amps	

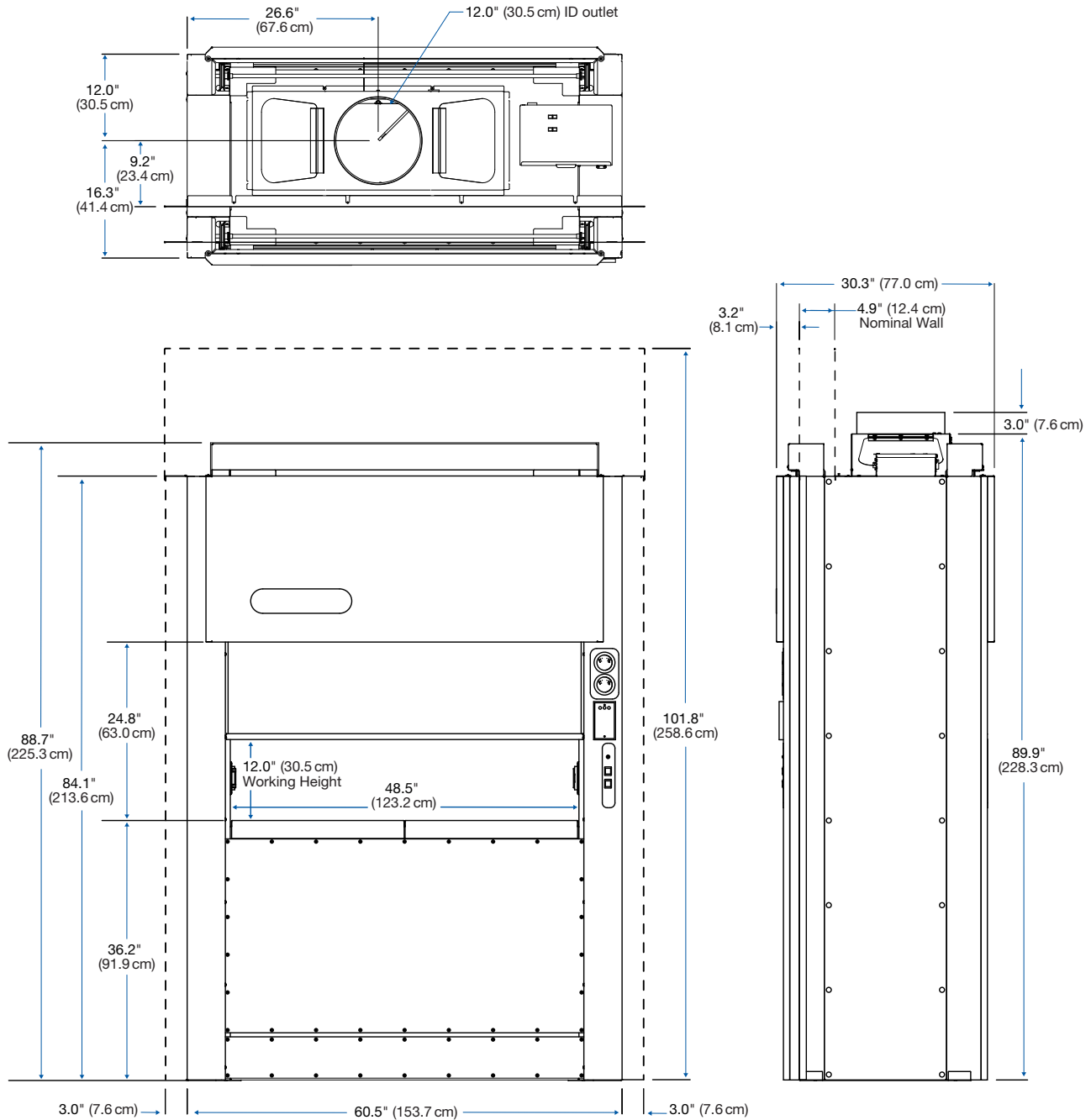
\*Minihelic® is a registered trademark of Dwyer Instruments Incorporated.

\* Labconco exclusive feature



# PuriCare® Dual Sided Biosafety Cabinets

## Dimensional Data & Accessories



**3789300—Replacement Exhaust Prefilter.** 20" w x 20" h x 1" deep (51 x 51 x 3 cm). Pleated Air Filter. One each. The PuriCare Dual Sided Biosafety Cabinet requires two each Exhaust Prefilters. Shipping weight 1 lb. (0.4 kg)

**Visit [labconco.com](https://labconco.com) to request information  
for all Labconco products.**

**LABCONCO CORPORATION**

8811 Prospect Avenue  
Kansas City, MO 64132

(800) 821-5525 | (816) 333-8811

[labconco.com](https://labconco.com)



©2023 LABCONCO CORPORATION

Product design subject to change without notice.

4-57-2/13/2023

