



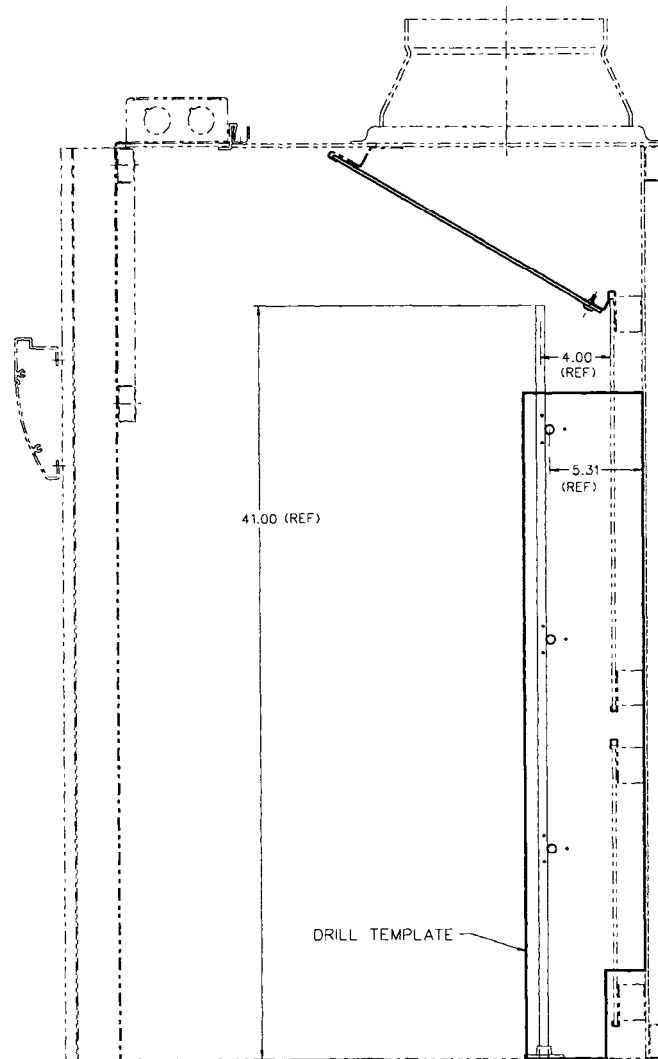
LABCONCO CORPORATION 8811 Prospect Ave, Kansas City, MO 64132
(816) 333-8811, Fax (816) 363-0130, (800) 821-5525

DISTILLATION GRIDS - Field Installation

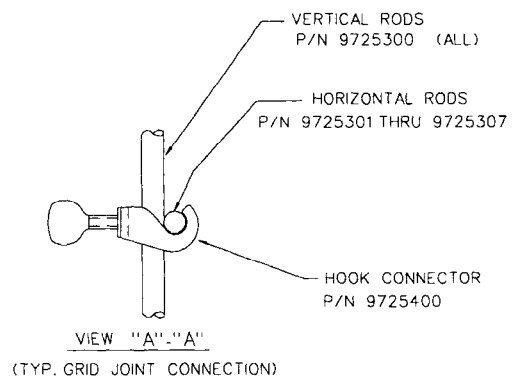
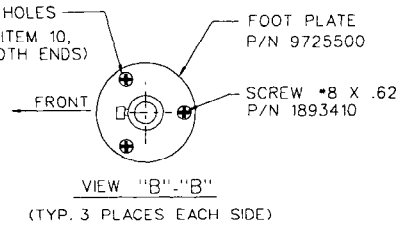
Location - Standard Mounting

The distillation grids have been strategically placed with the vertical rod center lines at a distance of 4" in front of the lower baffle and middle baffle.

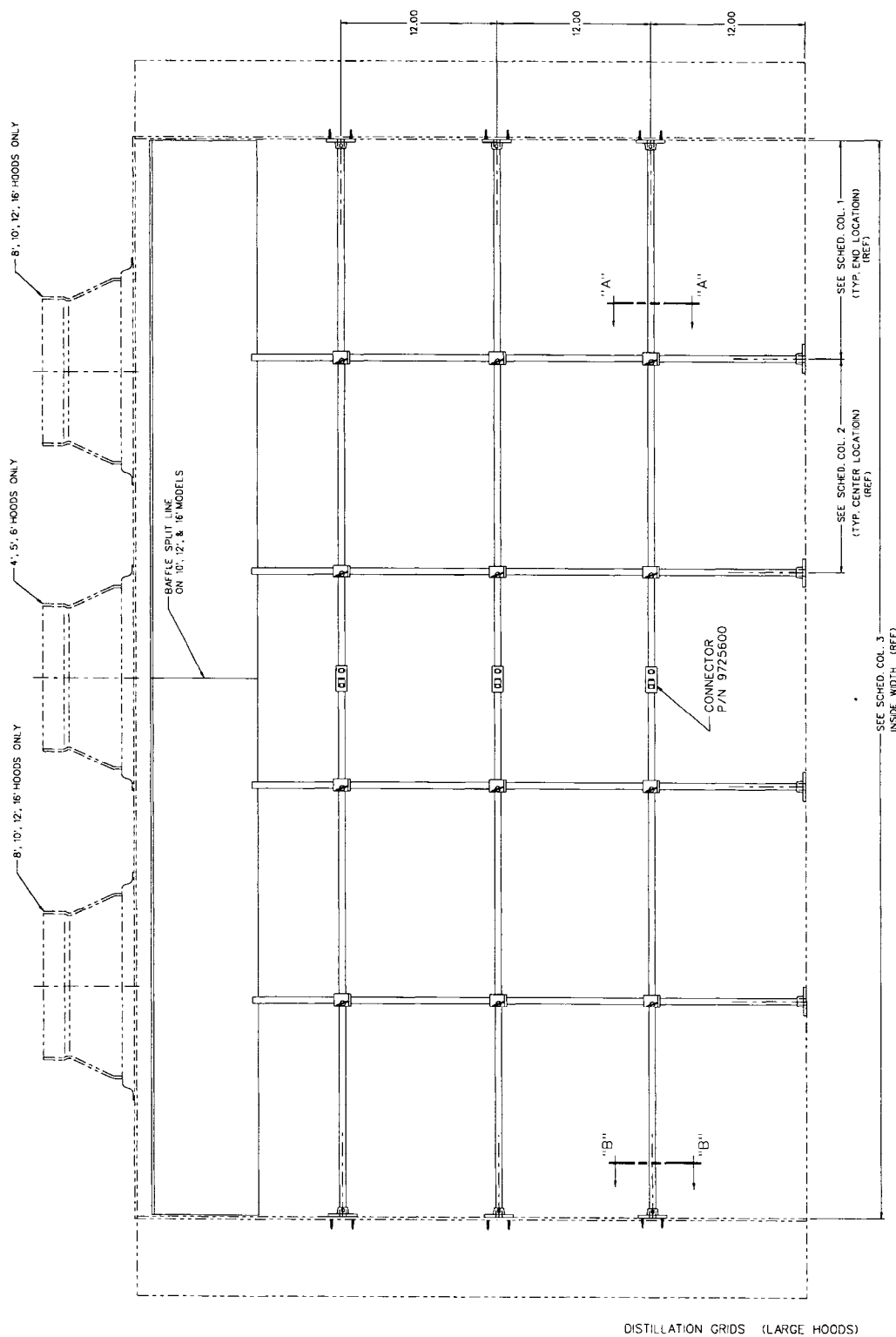
1. Locate the drill template in the kit and place the template on the side panels with the notched end at the bottom and against the back panel per the attached drawing.
2. Drill (3) .140 diameter pilot holes per each foot plate by using the drill template. There are a total of 6 foot plates mounted on the side panels - 3 each for the left side of the hood and 3 each for the right side of the hood. So you should drill a total of 18 holes.
3. Mount the foot plates on the side panels by using the #8 thread forming screws shown in view B-B on the attached drawing.
4. Install the horizontal rods and tighten the clamping screws on the foot plates and center connectors per the attached drawing.
5. The vertical rods can now be systematically installed in front of the horizontal rods per the attached drawing. The bottom of the rods slip into the foot plates which rest on the work-surface. Tighten the clamping screws on the foot plates.
 - 5a. **OPTIONAL:** For optional support you can drill .147 diameter pilot holes and mount the foot plates that rest on the worksurface. Use the additional #8 thread forming screws in the kit to mount the foot plates to the worksurface. Another alternative is to secure the foot plates to the worksurface with clear RTV sealant.
6. Install all the hook connectors which connect all the vertical rods to the horizontal rods as shown in View A-A on the attached drawing. Please note that all the vertical rods are in **front** of the horizontal rods. Simply tighten all the thumb screws on the hook connectors.
7. The installation is now complete.



DRILL (3) .140 DIA. HOLES
(USE DRILL TEMPLATE, ITEM 10,
AS A GUIDE - TYP BOTH ENDS)



DISTILLATION GRIDS (LARGE HOODS)



SCHEDULE			
PART NO.	COL. 1	COL. 2	COL. 3
8 FT. 9725200	18.03	16.73	86.24
10 FT. 9725201	10.27	17.94	110.24
12 FT. 9725202	9.53	16.45	134.24
16 FT. 9725203	10.28	17.96	182.24
4 FT. 9725204	10.27	-	58.24
5 FT. 9725205	5.53	-	50.24
6 FT. 9725206	0.27	13.90	62.24

Warranty-

We are committed to providing our customers with quality equipment and service after the sale. Part of this objective involves keeping you informed of changes and new product additions.

Labconco Corporation warrants products of its manufacture for one year, from receipt of the equipment by the purchaser, against defects in materials and workmanship. This limited warranty covers parts and labor but not transportation and insurance charges. In the event of a warranty claim, contact the dealer who sold you the product. If the cause is determined to be a manufacturing fault, the dealer or Labconco Corporation will repair or replace all defective parts to restore the unit to operation. **Under no circumstances shall Labconco Corporation be liable for indirect, consequential or special damages of any kind.** This statement of warranty may be altered by specific published amendments. No individual has authorization to alter the provisions of this warranty policy or its amendments. Lamps and expendable items such as filters are not covered by this warranty. Damage due to corrosion or accidental breakage is also not covered.

WARNING: various federal, state or local regulations may govern the disposal and/or emission of substances used in connection with this equipment. All users of this equipment are urged to become familiar with any regulations that apply in the user's area concerning the dumping of waste materials in or upon water, land or air and to comply with such regulations.

Shipping Claims-

If a shipment is received in visibly damaged condition, be certain to make a notation on the delivering carrier's receipt and have his agent confirm the damage on your receipt. Otherwise, the damage claim may be refused.

If concealed damage or pilferage is discovered, notify the carrier immediately and retain the entire shipment intact for inspection. Interstate Commerce Commission rules requires that the claim be filed with the carrier within 15 days after delivery.

NOTE: **Do not return goods.** Goods returned without prior authorization will not be accepted. Labconco Corporation and its dealers are not responsible for shipping damage. The recipient must file claims directly with the freight carrier. If authorization has been received to return this product, by accepting this approval, the user assumes all responsibility and liability for biological and chemical decontamination and cleansing. Labconco reserves the right to refuse delivery of any products that do not appear to have been properly cleaned and/or decontaminated prior to return.

Contacting Labconco-

If you have any questions that are not addressed in these instructions, or if you need technical assistance, please contact Labconco's Sales Information Department at either 1-(800) 821-5525, and Service Information at (800)-522-7658 or (816) 333-8811, between the hours of 7:00 a.m. and 6:00 p.m. Central Standard Time. Visit the Internet at <http://www.labconco.com> or e-mail: labconco@labconco.com