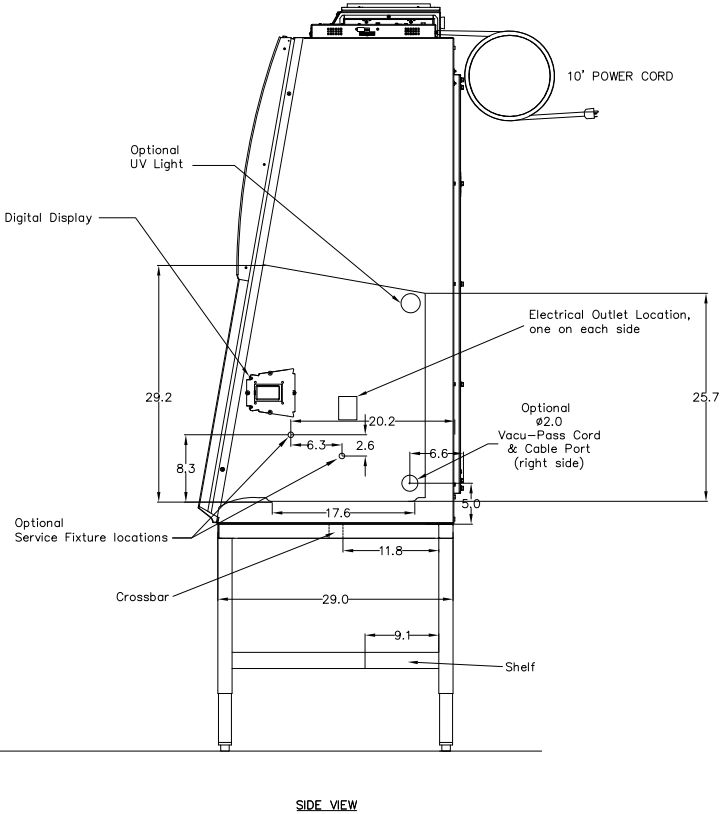
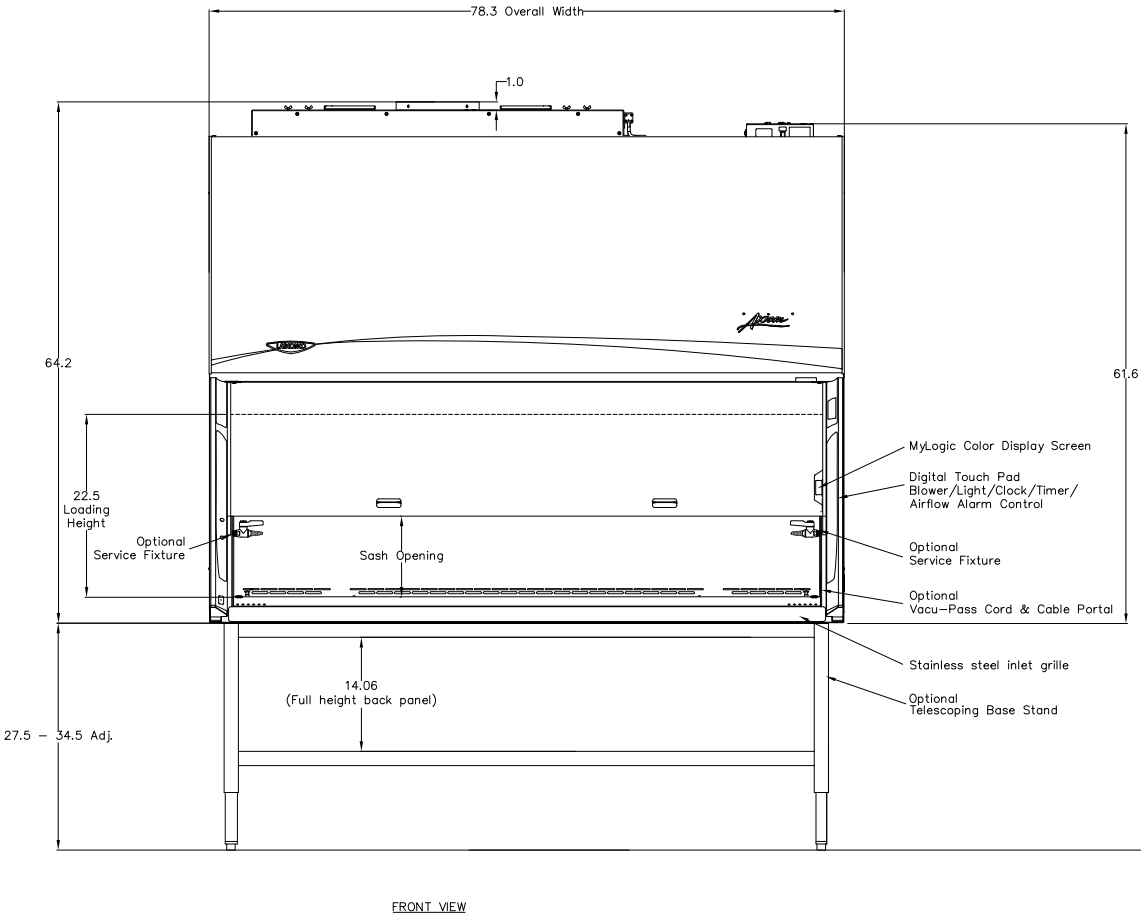
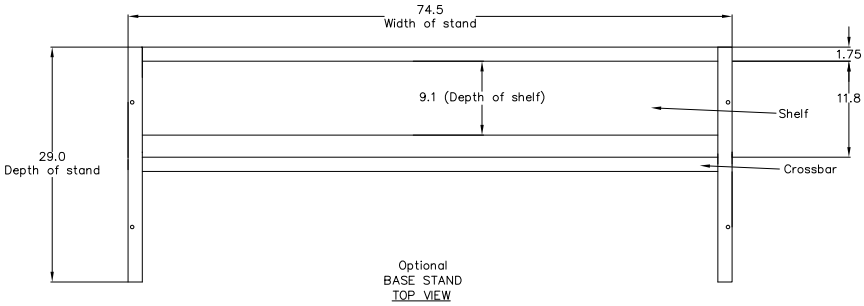


Airflow Information					
6' Canopy (when ducted): 8" Sash - 556 CFM @ 0.30" w.g.					
6' Canopy (when ducted): 10" Sash - 684 CFM @ 0.30" w.g.					
Power Requirements					
Country	Volts*	Amps	Hz	Cat #s	Plug
North America	115	16	60	01	⌚
Japan	100	16	50/60	21	⌚
North America	230	8	50/60	11	⌚
Shuko	230	8	50/60	31	⌚
China/Australia	230	8	50/60	41	⌚
British (UK)	230	8	50/60	51	⌚
India	230	8	50/60	71	⌚
Operational Watts					
8" Sash: 455 Watts					
10" Sash: 485 Watts					

* +/- 10% Nominal Value



GENERAL DESCRIPTION

Model: 3046XXX01

6'Purifier Axiom Type C1 Biological Safety Cabinet

8" or 10" Sash Opening

Certified Product

- * NSF/ANSI 49 Listed
- * ETL Listed to UL 61010–1
- * CE Mark (230V Models)
- * CAN/CSA 22.2 No. 61010–1
- * ADA Compliant Operation

Exterior Superstructure

* Double Wall Construction * Powder Coated Cold Rolled Steel

* Color: Glacier White

Interior Superstructure

* Type 304 Stainless Steel * Unitized Construction

* Removable, Seamless, Dished Work Surface with lift out knobs

Side Panels

* Each Side * Removable * Color: Glacier White

Air Foil

* Curved, Type 304 Stainless Steel Grill

* Integral Armrest

* Reserve–Air Secondary Airflow Slots

Sash

* Vertical Travel

* Tempered Safety Glass

* 10 degree angle

* Convertible from 8" to 10" or 10" to 8"

Electrical

* Energy efficient DC ECM blower operation

* Direct drive LED lighting

* Outlet:

- * 115V Models:
 - * Duplex, 115V / 50/60 Hz / GFCI, one on each side
 - * 5 amp max
- * 230V Models:
 - * Single–Plex, 230V / 50/60 Hz, one on each side
 - * 3 amp max
 - * With Dampened Self–Closing Flush Splash Cover
 - * ADA–compliant

MyLogic LCD Information Center

- * Interior mounted, color, touchpad control
- * Step–by–step instruction guides when programming
- * "Filter Life Remaining" bar graph for HEPA filter
- * Visual and audible alarms
- * Manual activation of duplexes, blower, light, etc.
- * Data output via mini USB

Airflow

- * Nominal inflow velocity of 105 feet per minute
- * Nominal downflow velocity of 65 feet per minute
- * Operation in A–mode or B–mode
- * 100% exhausted center section of work surface in B–mode
- * Active Protection Protocol engages during exhaust failure

Filters

* Supply & exhaust 99.99% efficient HEPA filters @ 0.3 um

* ISO Class 5 conditions per ISO 14644–1 & 2

Optional Packages:

- * Accessory Package:
 - * UV Light
 - * Vacu–Pass Cord & Cable Port Kit
 - * Service fixture – Both Sides – 1/4 turn control handle
 - * Telescoping Base Stand (non–welded)
 - * Work surface height of 30–37"

SCALE: SCALED TO FIT

Biological Safety Cabinets for:



LABCONCO CORPORATION • KANSAS CITY, MO USA 64132

800-821-5525 / 816-335-8811 • labconco.com

No.	Date

Date:

Drawing #
3046XXX01

Drawn By:

Checked By:

Approved By:

Sheet No.