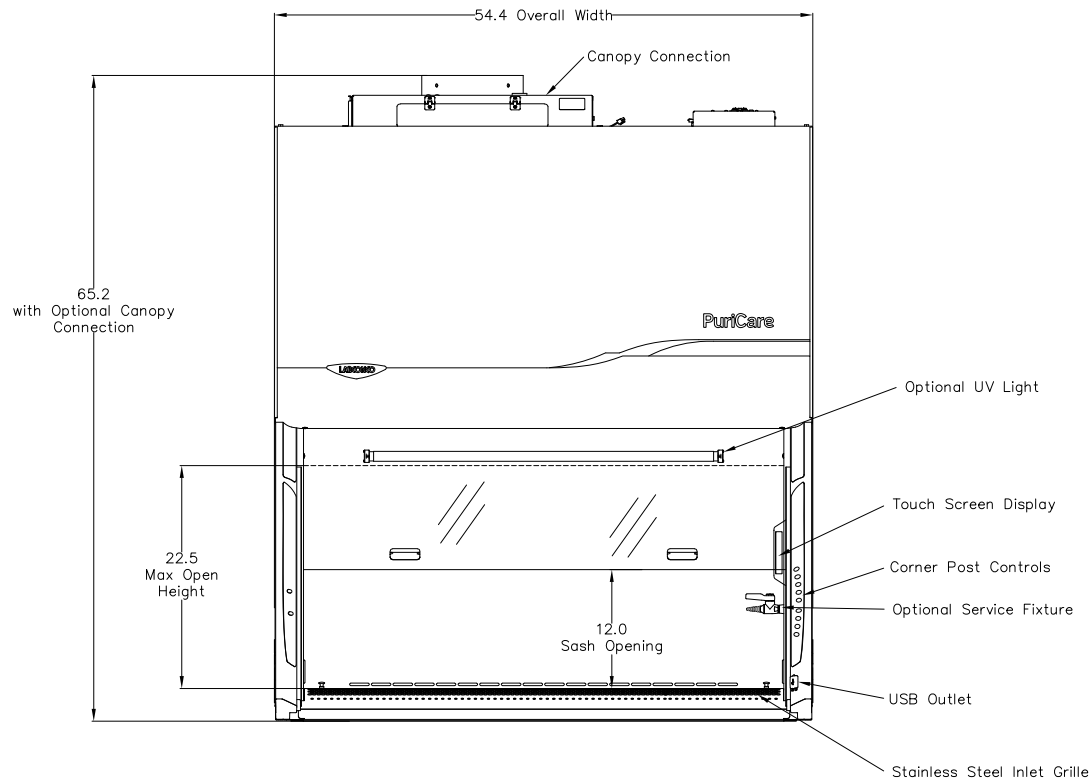


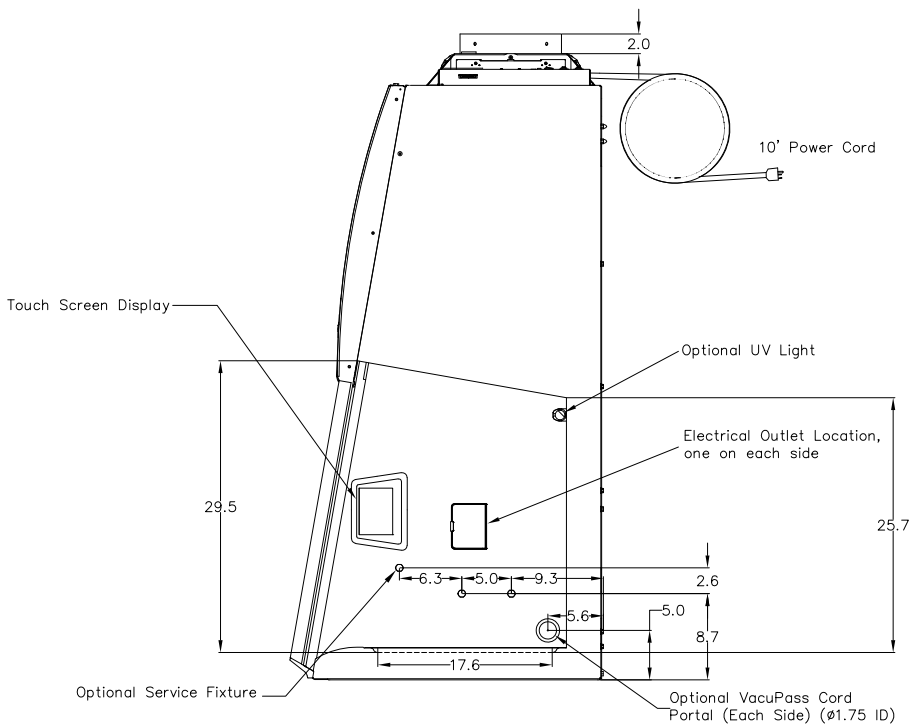
TOP VIEW



FRONT VIEW

Airflow Information					
4' Canopy (3889211): 539 CFM @ 0.15" w.g.					
Power Requirements					
Country	Volts*	Amps	Hz	Cat #s	Plug
North America	115	16	60	02	⌚
Japan	100	16	50/60	22	⌚
North America	230	8	50/60	12	⌚
Shuko	230	8	50/60	32	⌚
China/Australia	230	8	50/60	42	⌚
British (UK)	230	8	50/60	52	⌚
India	230	8	50/60	72	⌚
Operational Watts					
240 Watts					

* +/- 10% Nominal Value



SIDE VIEW

GENERAL DESCRIPTION

Model: 31242X0X2

4' PuriCare Procedure Station Class II, Type A2 Biosafety Cabinet with Ventus II Canopy

12" Sash Opening

Certified Product

* NSF/ANSI 49 Listed

* ETL Listed to UL 61010-1

* CE Mark (230V Models)

* CAN/CSA 22.2 No. 61010-1

* ADA Compliant Operation

Exterior Superstructure

* Double Wall Construction * Epoxy Coated Cold Rolled Steel

* Color: Optic White

Interior Superstructure

* Type 304 Stainless Steel * Unitized Construction

* Removable, Seamless, Dished Work Surface with lift out knobs

* Magnetic Accessory Area on Right Side Interior

Side Panels

* Each Side * Removable * Color: Optic White

Air Foil

* Curved, Type 304 Stainless Steel Grille

* Integral Armrest

* Reserve-Air Secondary Airflow Slots

Sash

* Vertical Travel

* 1/4" Tempered Safety Glass

* 10 degree angle

Electrical

* Energy efficient DC-ECM blower operation

* Direct drive LED lighting up to 180 Footcandles

* Outlet:

* 115V Models:

* Duplex, 115V / 50/60 Hz / GFCI, one on each side

* 5 amp max

* 230V Models:

* Single-Plex, 230V / 50/60 Hz, one on each side

* 3 amp max

* Dampened Self-Closing Flush Splash Cover

Logic Information Center

* 5" Full Color Touchscreen

* Filter Life Remaining for HEPA Filter

* Data Logs and System Traceability

* Visual and Audible Alarms

* Data Output via USB Export

Controls

* Right Corner Post * Solid State

Airflow

* Nominal inflow velocity of 105 feet per minute

* Nominal downflow velocity of 55 feet per minute

* Approximately 70% air recirculation

Filters

* Supply & exhaust 99.99% efficient HEPA filters @ 0.3 um

* ISO Class 5 conditions per ISO 14644-1 & 2

* Washable screen-type prefilter located under work surface to trap dander and particulates to extend HEPA filter life

Optional Packages:

* Accessory Package:

* UV Light

* Vacu-Pass Cord & Cable Port Kit, one on each sidewall

* Service fixture - Right Side - 1/4 turn control handle

Base Stand Options Available: (Sold separately)

* Telescoping Base Stand (with or without casters)

* Universal Hydraulic Base Stand (with or without casters)

* SoLo Hydraulic Lift Base Stand (with casters)

SCALE: SCALED TO FIT

Biological Safety Cabinets for:



LABCONCO CORPORATION • KANSAS CITY MO USA 64132
800-821-5525 / 816-333-8811 • labconco.com

No.	Date

Date:

Drawing #
31242X0X2

Drawn By:

Checked By:

Approved By:

Sheet No.