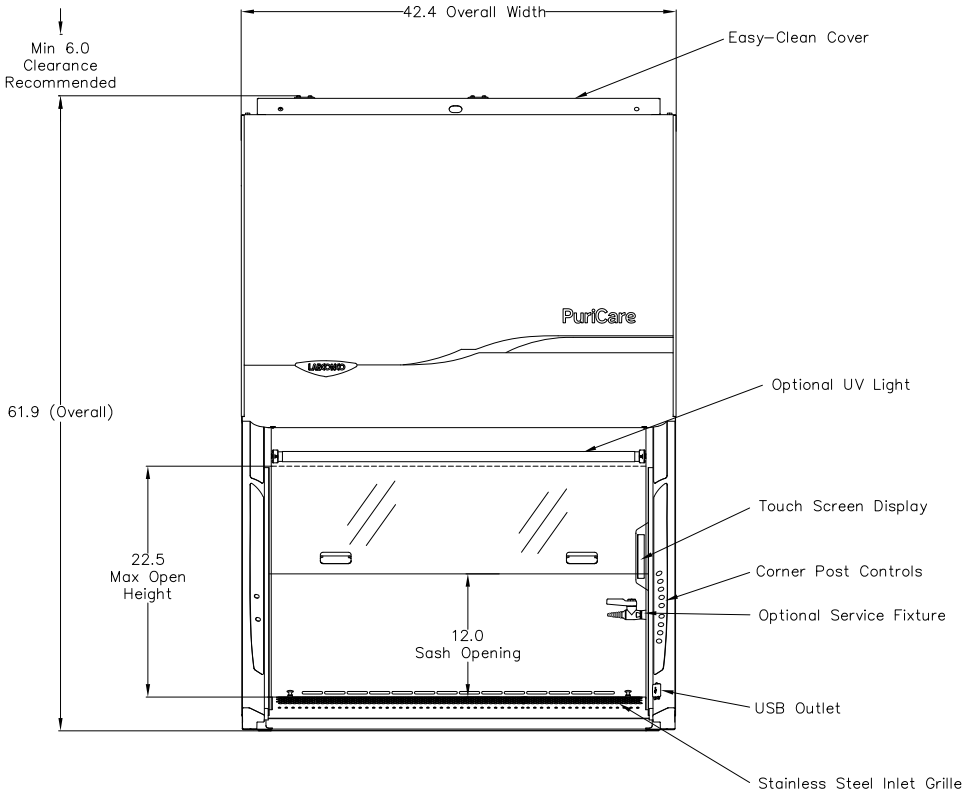


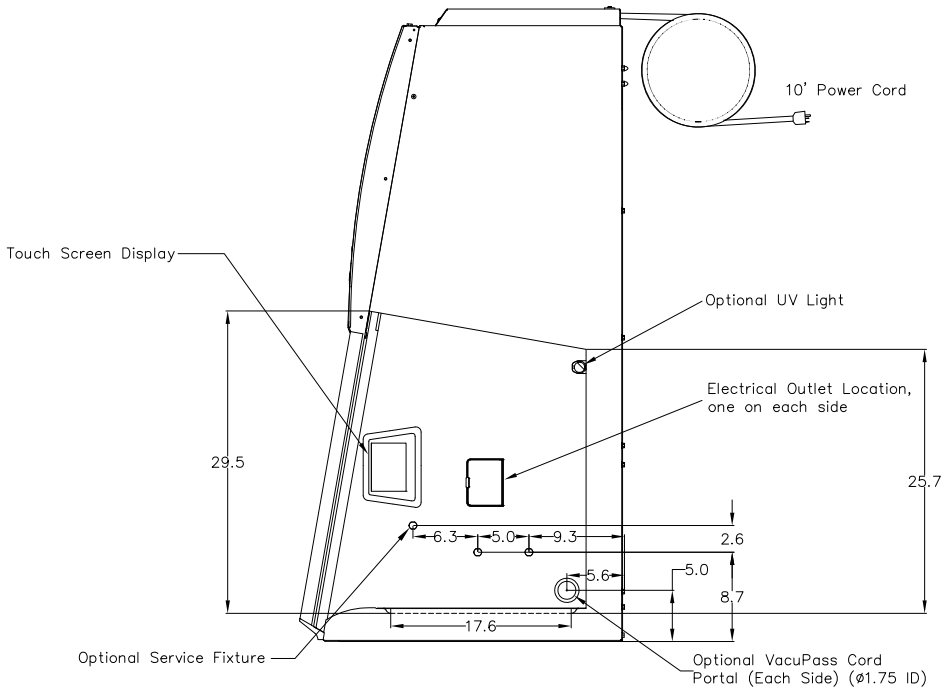
TOP VIEW

Power Requirements					
Country	Volts*	Amps	Hz	Cat #s	Plug
North America	115	12	60	02	
Japan	100	12	50/60	22	
North America	230	6	50/60	12	
Shuko	230	6	50/60	32	
China/Australia	230	6	50/60	42	
British (UK)	230	6	50/60	52	
India	230	6	50/60	72	
Operational Watts					
195 Watts					

* +/- 10% Nominal Value



FRONT VIEW



SIDE VIEW

GENERAL DESCRIPTION

Model: 31232X0X2

3' PuriCare Procedure Station Class II, Type A2 Biosafety Cabinet

12" Sash Opening

Certified Product

- * NSF/ANSI 49 Listed
- * ETL Listed to UL 61010-1
- * CE Mark (230V Models)
- * CAN/CSA 22.2 No. 61010-1
- * ADA Compliant Operation

Exterior Superstructure

- * Double Wall Construction
- * Epoxy Coated Cold Rolled Steel
- * Color: Optic White

Interior Superstructure

- * Type 304 Stainless Steel
- * Unitized Construction
- * Removable, Seamless, Dished Work Surface with lift out knobs
- * Magnetic Accessory Area on Right Side Interior

Side Panels

- * Each Side
- * Removable
- * Color: Optic White

Air Foil

- * Curved, Type 304 Stainless Steel Grille
- * Integral Armrest
- * Reserve-Air Secondary Airflow Slots

Sash

- * Vertical Travel
- * 1/4" Tempered Safety Glass
- * 10 degree angle

Electrical

- * Energy efficient DC-ECM blower operation
- * Direct drive LED lighting up to 180 Footcandles
- * Outlet:
 - * 115V Models:
 - * Duplex, 115V / 50/60 Hz / GFCI, one on each side
 - * 5 amp max
 - * 230V Models:
 - * Single-Plex, 230V / 50/60 Hz, one on each side
 - * 3 amp max
 - * Dampened Self-Closing Flush Splash Cover

Logic Information Center

- * 5" Full Color Touchscreen
- * Filter Life Remaining for HEPA Filter
- * Data Logs and System Traceability
- * Visual and Audible Alarms
- * Data Output via USB Export

Controls

- * Right Corner Post
- * Solid State

Airflow

- * Nominal inflow velocity of 105 feet per minute
- * Nominal downflow velocity of 55 feet per minute
- * Approximately 70% air recirculation

Filters

- * Supply & exhaust 99.99% efficient HEPA filters @ 0.3 um
- * ISO Class 5 conditions per ISO 14644-1 & 2
- * Washable screen-type prefilter located under work surface to trap dander and particulates to extend HEPA filter life

Optional Packages:

- * Accessory Package:
 - * UV Light
 - * Vacu-Pass Cord & Cable Port Kit, one on each sidewall
 - * Service fixture - Right Side - 1/4 turn control handle
- Base Stand Options Available: (Sold separately)
 - * Telescoping Base Stand (with or without casters)
 - * Universal Hydraulic Base Stand (with or without casters)
 - * SoLo Hydraulic Lift Base Stand (with casters)

Biological Safety Cabinets for:



LABCONCO CORPORATION • KANSAS CITY, MO USA 64132
800-821-5525 / 816-333-8811 • labconco.com

No.	Date

Date:
Drawing # 31232X0X2
Drawn By:
Checked By:
Approved By:
Sheet No.